



JANSSEN
COSMETICS

WE BEAUTIFY THE WORLD



PRESENTATION FOLDER

Product information with treatment sequence



JANSSEN COSMETICS	4
Cosmeceuticals	6
Dry Skin	8
Sensitive Skin	10
Oily Skin	12
Combination Skin	14
Fair Skin	16
All Skin Needs	18
Demanding Skin	20
Mature Skin	22
Platinum Care	24
Make Up	26
MEN	28
Sun	30
Body	32
Professionals	36
Ampoules	40
Peeling Masks	42
Dermafleece Masks	44
Peel Off Masks	46
Facial Cream Masks	48
Essentials	50
Skin Applets	52
Wellness & Spa	66
Ocean Treasure	68
Sweet Temptation	70
Pure Harmony	72
Vino Enjoyment	74
Youth Perfection	76
Nature Experience	78
Prime Essentials	80

PLATINUM CARE



COSMECEUTICALS

FACE

BASIC



Dry Skin



Sensitive Skin



Demanding Skin



Mature Skin



Oily Skin



Combination Skin



Make Up



MEN



Fair Skin



All Skin Needs

DELUXE

BODY



Body



Sun



After Sun

PROFESSIONALS



Exfoliation System



Ampoules



Dermafleece Masks



Peel Off Masks



Facial Cream Masks



Peeling Masks



Essentials

WELLNESS & SPA



Ocean Treasure



Sweet Temptation



Pure Harmony



Vino Enjoyment



Youth Perfection



Nature Experience



Prime Essentials

WE BEAUTIFY THE WORLD

A PIONEER IN COSMECEUTICALS

The success story of Janssen Cosmetics started with the vision of creating care products that go beyond those products already available on the cosmetics market! Company founder Walther Janssen set out in search of highly efficient active ingredients that go beneath the skin and promise more than the superficial skincare that was the norm until that point. Providing great results right down to the deepest layers of the skin was the challenge faced by Janssen Cosmetics in 1990.

A symbiosis of pharmaceutical and cosmetic active ingredients form the basis of today's Janssen Cosmetics care products and make the transition from true beauty to scientifically sound skincare an easy one. Only active ingredients with convincing visible, tangible results and high skin tolerability are used in the care products of Janssen Cosmetics.

Thanks to close cooperation with esteemed dermatologists and leading research laboratories, JANSSEN COSMETICS has succeeded in creating system care products that meet the skin's diverse needs perfectly. Each cosmeceutical series is based on an active ingredient concept that is perfectly tailored to various skin types and achieves immediate and long lasting skin improvement.

Today, the product range from Janssen Cosmetics includes more than 250 commercial and treatment products for your beauty cabinet. Whether it be deep impact cosmeceutical products, premium luxury care or relaxing wellness rituals – Janssen Cosmetics leaves no wish unfulfilled!

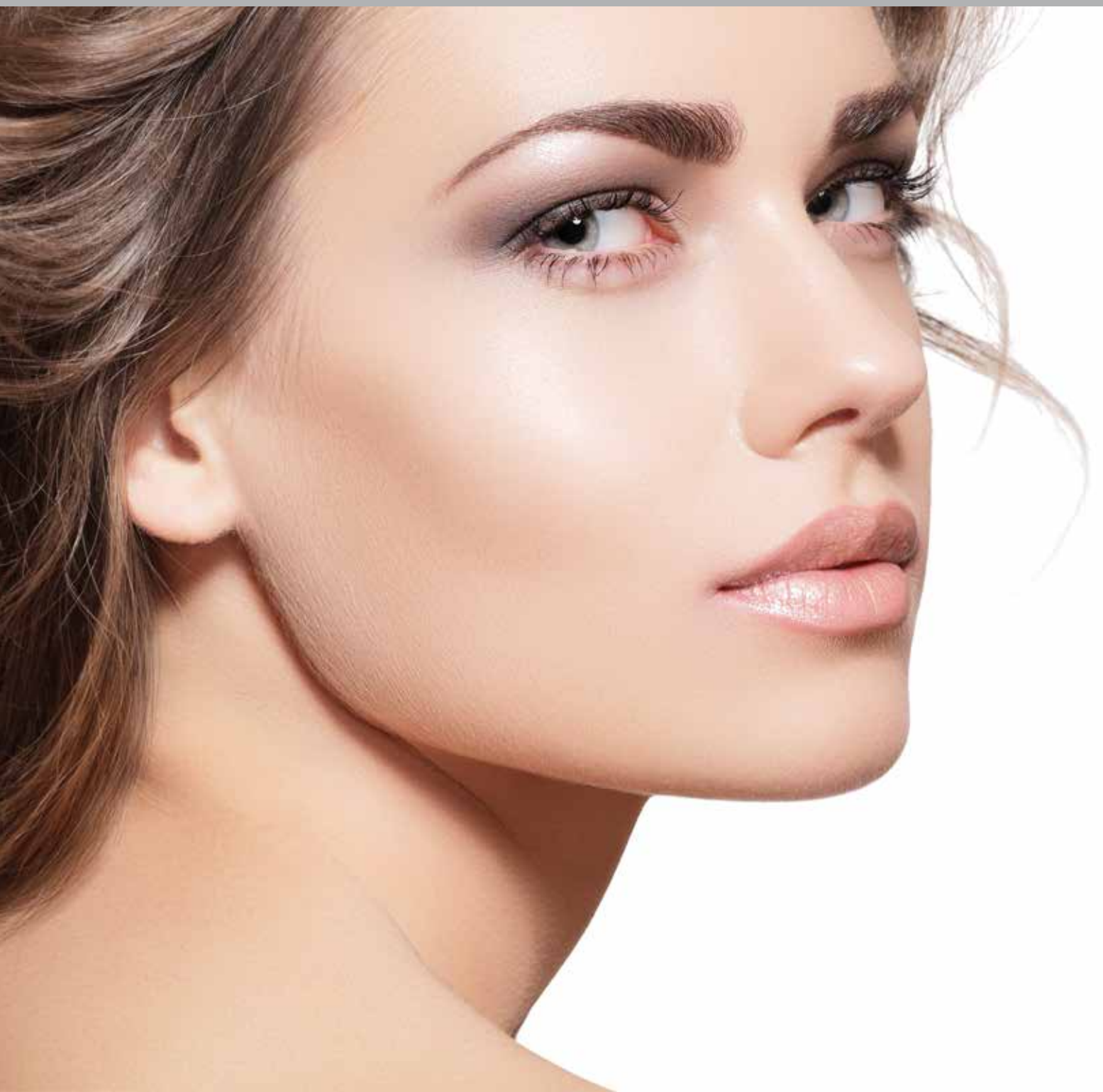
We place the highest value on quality and skin tolerability. All products bear the "Made in Germany" quality seal and have been awarded TÜV certification. From extracting the raw materials through to processing and bottling the product – at Janssen Cosmetics, every step in our quality management process is meticulously controlled and documented. The latest active ingredient complexes, processing techniques and research results will be promptly reviewed and considered for new developments.

Outstanding commitment pays off! In recent years, we have been awarded many prestigious awards, one of which was being named COMPANY OF THE YEAR in Miami in 2011. Janssen Cosmetics has also won the "Prix de l'Innovation" innovation prize for new products 5 times in a row in the cosmetics capital of Paris. In 2017, we were awarded the coveted Spa Diamond Award in Germany for our Platinum Care premium line. In addition, we were awarded the GERMAN BRAND AWARD for "Industry Excellence in Branding" in the category "Beauty & Care" in 2018.

We have been working in the name of beauty with passion and flair since 1990. Today we make people feel beautiful in over 80 countries!



2nd generation senior management: Reinhard & Ulrich Janssen



COSMECEUTICALS

YOUR TREATMENT ROOM: DIVERSE AND CUSTOMER-FOCUSED

Success begins in the treatment room: Unique treatments to help you stand out from the competition and retain long-term customers are sought after here.

That's why our team of experts develop highly effective, state-of-the-art treatment room concepts based on the special JANSSEN COSMETICS methods. Individually tailored to all the different skin types and skin conditions.

From immediate solutions with skin problems through impact treatments to luxurious pleasure and wellness treatments.

The building block principle by JANSSEN COSMETICS also allows you to freely select your individual methods and beauty products for your studio.

The treatment room is the best place to sell products. We help you here too: Together, we test the best and most profitable methods for making your treatment room even more successful.

The right solution for every customer: An exceptionally diverse range of products for you to combine as you wish in the treatment room.



DRY SKIN

MOISTURE BOOSTER FOR DRY SKIN

The DRY SKIN active ingredient system with hyaluronic acids is a true moisture booster: In your treatment room and with home care, different high active ingredient concentrations provide intensive and long-lasting moisture – and therefore optimal protection.

They strengthen the skin's protective film, alleviate wrinkles due to dryness and give your customer's complexion a noticeably fresh radiance.

YOUR TREATMENT SOLUTION:
Moisture-penetrating special treatment for skin lacking oil and moisture



Mild Creamy Cleanser

Retail 200 ml Ref. 500
Prof. 500 ml Ref. 500P



Mild cleansing lotion for dry skin. Leaves the skin feeling clean and optimally prepares it for the subsequent care steps. With natural avocado oil.

Radiant Firming Tonic

Retail 200 ml Ref. 501
Prof. 500 ml Ref. 501P



Refreshing facial tonic for dry skin. Refreshes the skin after cleansing with Mild Creamy Cleanser. With moisturizing collagen.

Mild Face Rub

Retail 50 ml Ref. 508
Prof. 200 ml Ref. 508P



The mild peeling cream removes dead skin cells from dry skin, leaving it supple and smooth. With peeling pearls consisting of jojoba wax and caring coconut oil.

Aquatense Moisture Gel

Retail 50 ml Ref. 511
Prof. 150 ml Ref. 511P



Refreshing cream gel for dry, moisture-deficient skin. With aquaporin-stimulating peptide (ASP) and an hydration complex consisting of hyaluronic acid and Atlantic algae.

Day Vitalizer

Retail 50 ml Ref. 517
Prof. 150 ml Ref. 517P



Daily care cream for dry skin. Replenishes the moisture deposits and reduces wrinkles caused by dryness. With short-chain hyaluronic acid, Atlantic algae, Imperata cylindrica and macadamia oil.

Hyaluron Impulse

Retail 50 pcs. Ref. 524
Prof. 150 pcs. Ref. 524P



The care capsule for dry skin offers a gentle texture and leaves the skin feeling particularly soft. With hyaluronic acid. Open the capsule using a pair of scissors. Squeeze out the entire content and stroke over the face, neck and neckline using the fingertips. For external use only.

Night Replenisher

Retail 50 ml Ref. 527
Prof. 200 ml Ref. 527P



Rich care cream for dry skin. After just a short period of time, the skin becomes smooth and supple again. Native moisture loss is effectively prevented in the long-term and the feeling of dry skin disappears. With short-chain hyaluronic acid, avocado oil and an extract from white lupines.

Hydrating Skin Complex

Retail 30 ml Ref. 535
Prof. 50 ml Ref. 535P



Serum for moisture deficient skin. Smooths wrinkles caused by dryness and effectively regulates the skin's moisture content. With short and long-chain hyaluronic acid, high molecular weight polysaccharides from the fruit of the carob tree plus extracts of Atlantic algae and the desert plant Imperata cylindrica.

Eye Zone Gel

Retail 30 ml Ref. 561
Prof. 30 ml Ref. 561P



Refreshing, moisturizing eye contour gel. Smooths wrinkles caused by dryness in the eye area, and reduces swelling and dark rings around the eyes. Ideal for people who wear contact lenses and glasses. With sensitive complex plus short and long-chain hyaluronic acid.

Hydrating Gel Mask

Retail 75 ml Ref. 590
Prof. 200 ml Ref. 590P



Refreshing gel mask for dry, moisture deficient skin. With aquaporin-stimulating peptide (ASP), an extract of the desert plant Imperata cylindrica and sorbitol.

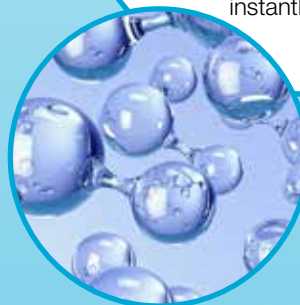
Effective ingredients in this line:

- Short and long chain hyaluronic acid
- Aquaporin-stimulating peptide
- Imperata cylindrica root extract
- Macadamia and avocado oil

TIP FOR PROFESSIONALS

Individual combinations for your treatment:

For example, the Hyaluron Fluid Ampoule Concentrate with the Hydrating Gel Mask. This allows you to achieve a first-class effectiveness boost and infuses the skin with moisture in a way that your customer will instantly notice.



SENSITIVE SKIN

STRENGTHENING PROTECTION AND BUILDING OF DEFENCE FOR SENSITIVE SKIN

Two effective systems help to rebalance your client's skin: The skin defence complex reduces skin sensitivity by 49%*. The highly active sensitive complex strengthens the skin's barrier structure, soothes and acts against irritations: Proven effect with 20% fewer red veins*. We also offer you fine ampoules and high-quality collagen masks without added fragrances or preservatives for the treatment room.

TOP SKIN TOLERANCE AFTER DERMATEST:

The cosmeceutical line for relieving and stabilising irritated, sensitive skin



* Sensitive complex: highly-active plant extract with active substances from marsh pennywort, horse chestnut, butcher's broom, calendula and liquorice root.

**Skin defense complex: plant extract with active substances from balloon vine, echium seed oil and the unsaponifiable constituents of sunflower oil.

Mild Cleansing Cream

Retail 150 ml Ref. 2200
Prof. 300 ml Ref. 2200P



Extra-mild cleansing cream with a combination of skin-friendly oils for gently cleansing sensitive skin.

Soothing Gel Toner

Retail 200 ml Ref. 2201
Prof. 500 ml Ref. 2201P



Soothing Gel Toner can do far more than a classic facial tonic. Soothing plant-based active substances are embedded in a light gel base. The moisture which is bound enhances the protective function of sensitive skin and immediately alleviates the sensation of brittle and tense skin. With sensitive complex* and aloe vera.

Soothing Face Lotion

Retail 50 ml Ref. 2210
Prof. 150 ml Ref. 2210P



The light care lotion successfully averts the increased reactivity of sensitive skin and it is an ideal foundation for make-up and night care for skin which tends to become oily. The skin defense complex calms the skin, strengthens its native protection and prevents irritation. With skin defense complex**, isostearyl-isostearate (ISIS), hyaluronic acid, α -bisabolol, saccharide isomerate and squalane.

Calming Sensitive Cream

Retail 50 ml Ref. 2220
Prof. 200 ml Ref. 2220P



Calming Sensitive Cream is a rich care cream. With a lipid content of around 25%. Care and moisture retention substances soothe the skin during the day and throughout the night. Irritated skin rapidly becomes soft and supple again; the pleasant feeling of relaxed skin is guaranteed. With skin defense complex**, isostearyl-isostearate (ISIS), hyaluronic acid, α -bisabolol, saccharide isomerate and squalane.

Anti-Pollution Cream

Retail 50 ml Ref. 2221
Prof. 150 ml Ref. 2221P



Protective care cream with effective anti-oxidative plant-based active substances that strengthen the skin's resistance to environmental pollutants. It contains red camellia extract, Saccharide Isomerate, long- and short-chain hyaluronic acid, allantoin and shea butter.

Sensitive Skin Complex

Retail 30 ml Ref. 2230
Prof. 50 ml Ref. 2230P



Sensitive Skin Complex is an extraordinary active substance complex which acts down to the lowest level of the epidermis, which is precisely where it restores the skin's native protection. The skin becomes significantly more stable and does not react as intensely to irritating influences. With skin defense complex**, α -bisabolol, orgasol, long- and short-chain hyaluronic acid and saccharide isomerate.

Pro-Immune Serum

Retail 30 ml Ref. 2231
Prof. 50 ml Ref. 2231P



Active-substance serum with biotechnological agents that stabilises the skin's immune cells to enable them to resist harmful external influences. It contains beta glucan, ectoine, Saccharide Isomerate, long- and short-chain hyaluronic acid, allantoin, bisabolol and vitamin E.

Couperose Gel

Retail 30 ml Ref. 2233
Prof. 50 ml Ref. 2233P



Highly-active care concentrate for improving couperose skin. It is also suitable for daily application on its own in the fight against couperose. Continued application should be carried out over a period of several months under all circumstances. Only this enables redness and also swelling to be noticeably reduced. With sensitive complex*, α -bisabolol, orgasol, squalane and isostearyl isostearate (ISIS).

Soothing Face Mask

Retail 75 ml Ref. 2240
Prof. 200 ml Ref. 2240P



Soothing Face Mask should always be used when the skin sends out an SOS. This transforms it into a genuine therapeutic product. Redness and swelling are relieved after just a short period of application. With sensitive* and skin defense complex**, hyaluronic acid and saccharide isomerate.

Eye Care Lotion

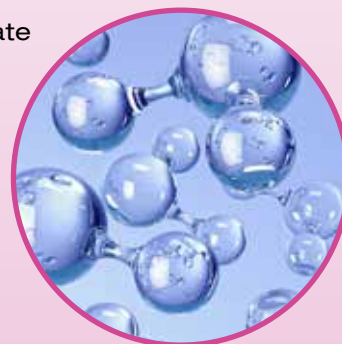
Retail 30 ml Ref. 2260
Prof. 30 ml Ref. 2260P



Eye Care Lotion is particularly easy to distribute. It is rapidly absorbed and cools in a pleasant manner. The synergy effect arising from the sensitive and skin defense complex fortifies the capillary function and verifiably reduces dark rings around the eyes. With sensitive* and skin defense complex**, eyebright, isostearyl-isostearate (ISIS), α -bisabolol and hyaluronic acid.

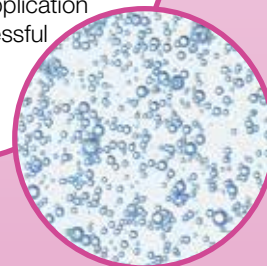
Effective ingredients in this line:

- Sensitive complex
- Skin Defense Complex
- Bisabolol
- Isostearyl-isostearate
- Squalane
- Long and short chain hyaluronic acid



TIP FOR PROFESSIONALS

Depending on your client's skin condition, use the De-Stress Ampoule Concentrate or Couperose Fluid. Combine the ampoule with the Derafleece Collagen Aloe Vera Mask made from pure collagen. This will make every application a noticeable successful treatment.



OILY SKIN

DEEP EFFECT FOR BLEMISHED SKIN

As a trained JANSSEN COSMETICS cosmetician you can offer emergency remedies: With an anti-sebum active ingredient complex you can combat pustules, blackheads and open pores.

In the long term, you regulate the client's oily-blemished skin condition with clarifying and soothing combinations of active ingredients – for an instantly visible, noticeable and sustainable improvement of their complexion.

RESTORE BLEMISHED PROBLEM SKIN TO NORMAL.

The OILY SKIN cosmeceutical line to help your clients regain a healthy, pure skin condition



Clarifying Cleansing Gel

Retail 200 ml Ref. 4400
Prof. 500 ml Ref. 4400P



Mild cleansing gel which enables gentle but nevertheless thorough cleansing. With yeast extract, sugar tenside and allantoin.

Purifying Tonic Lotion

Retail 200 ml Ref. 4401
Prof. 500 ml Ref. 4401P



Alcohol-free facial tonic with skin-friendly pH value for sebum flow regulation. With yeast extract and allantoin.

Bio-Fruit Gel Exfoliator

Retail 30 ml Ref. 4407
Prof. 50 ml Ref. 4407P



Peeling for cleansing blocked pores and increasing skin renewal. With fruit acid complex consisting of malic, tartaric and citric acid.

Clarifying Cream Gel

Retail 50 ml Ref. 4420
Prof. 150 ml Ref. 4420P



Sebum flow-regulating care gel for oily, blemished skin. Ensures a visibly fine-pored skin profile. With extracts of avocado, red algae and aloe vera.

AHA Face Cream

Retail 50 ml Ref. 4421
Prof. 150 ml Ref. 4421P



Cream with fruit acids for oily blemished skin. Increases cellular renewal and exfoliation, reduces blackheads and refines the pores. Contains fruit acids and a moisturising sugar compound.

Normalizing Skin Complex

Retail 30 ml Ref. 4430
Prof. 50 ml Ref. 4430P



Highly-dosed active substance concentrate for sebum gland regulation refined pore structure, sustained prevention of pustules and oily sheen. With anti-sebum active substance complex with oleanolic acid, aloe vera extract and salicylic acid.

Microsilver Serum

Retail 30 ml Ref. 4431
Prof. 50 ml Ref. 4431P



Serum with active ingredient to improve the appearance of blemished, oily skin prone to pustular break out. Contains micro-silver, glycolic acid, allantoin and D-panthenol.

Purifying Mask

Retail 75 ml Ref. 4440
Prof. 200 ml Ref. 4440P



Sebum-absorbing care mask for deep cleansing the skin. With healing earth, anti-sebum active substance complex with oleanolic acid and aloe vera extract.



dermatest® confirms:

approx. **18.23%** reduction
in the skin's lipid content
after 4 weeks' application*

Effective ingredients in this line:

- Yeast extract
- Anti-sebum active substance complex
- Fruit acids
- Aloe Vera extract
- Microsilver



TIP FOR PROFESSIONALS

For deeper effect, use the Normalizing Skin Fluid Ampoule, together with Dermafleece Pure either Hyaluron or the Peel-Off Mask "Dead Sea Black Mask" with alginate. Your client's skin will instantly be able to breathe again.



*Test result from independent dermatological institute dermatest® regarding a 4-week field test involving 20 women.

COMBINATION SKIN

BALANCING AND NORMALIZING COMBINATION SKIN

With a perfectly balanced combination of special products, you can optimally support your clients in their treatment and home application. The special care with the contrasting demands of combination skin is based on the range of effects of the active ingredient inositol (rice bran). For a visible improvement to the complexion, use the COMBINATION SKIN system that can be individually combined. Your clients will thank you for it.

Help combination skin with the multi talented active ingredient inositol



Gentle Cleansing Powder

Retail 100 g Ref. 6600
Prof. 100 g Ref. 6600P



Water-soluble cleansing powder for combination skin. With skin-friendly tensides for clear, matte skin.

Tinted Balancing Cream

Retail 50 ml Ref. 6611
Prof. 100 ml Ref. 6611P



Tinted care cream that normalizes and reduces the excessive oily sheen. With rice bran, red algae extract, aloe vera and fine polyamide powder.

Balancing Cream

Retail 50 ml Ref. 6620
Prof. 200 ml Ref. 6620P



Balancing care cream for combination skin. Leaves the skin looking clear, matte and fine-pored. With extracts of red algae, rice bran and aloe vera.

Balancing Skin Complex

Retail 30 ml Ref. 6630
Prof. 50 ml Ref. 6630P



Highly-dosed active substance concentrate for regulating sebum gland function and refining the pores. With anti-sebum active substance complex with oleonic acid, larch agaric extract and red algae extract.



TIP FOR PROFESSIONALS

Using the Enzyme Peeling Mask, skin blemishes are effectively prevented, the complexion is refined and the skin is optimally prepared for the subsequent treatment. The PEELING MASKS are also wonderfully suitable for large-scale application such as on the décolleté and back.



Effective ingredients in this line:

- Larch Agaric Extract
- Red algae extract
- Anti-sebum active substance complex
- Sugar-like substance Inositol from rice bran



FAIR SKIN

BALANCE HYPERPIGMENTED SKIN

Trained cosmeticians understand how to block the skin's melanin synthesis effectively in 4 steps:

1. Protection of the skin from UV radiation
2. Blockage of cell messengers
3. Reduction of melanin synthesis
4. Inhibition of melanin removal

FAIR SKIN balances existing discolouration and prevents the appearance of new discolourations in pigment.

Problem solving treatments for pigmentation disorders in your salon and for home use.



Melafadin Cleansing Powder

Retail 60 g Ref. 3300
Prof. 100 g Ref. 3300P



The white and pleasant-smelling powder contains pure vitamin C for effectively brightening the skin. When combined with water produces a light creamy foam. Plant-based active surface substances remove impurities from the surface of the skin.

Melafadin Toner

Retail 100 ml Ref. 3301
Prof. 500 ml Ref. 3301P



The facial tonic prepares the skin for effective care with Fair Skin products. It inhibits the occurrence of dark flecks through highly-active plant extracts, promotes even skin and revives the complexion.

Brightening Exfoliator

Retail 50 ml Ref. 3307
Prof. 100 ml Ref. 3307P



The peeling cream visibly brightens dark skin in two ways. Firstly, rounded abrasive particles eliminate the grey film on the skin and recognizably reduce irregular dark discolourations. Secondly, AHAs from citric and glycolic acid support the exfoliation effect. Surplus skin cells and the melanin accumulated within are effectively dissolved and finally removed.

Brightening Day Protection

Retail 50 ml Ref. 3311
Prof. 100 ml Ref. 3311P



Skin brightening care cream with SPF 20. Thanks to microfine white pigments, skin immediately appears brighter and less blemished after application. Over time, the highly effective active ingredient, hexylresorcinol, provides a skin brightening effect.

Brightening Night Restore

Retail 50 ml Ref. 3321
Prof. 150 ml Ref. 3321P



Skin brightening and moisturising overnight care, which perfectly complements the Brightening Day Protection product and continuously supplies skin with the effective skin-brightening active ingredient hexylresorcinol during the night.

Fair Comlexion Serum

Retail 30 ml Ref. 3330



Skin brightening active ingredient serum as a perfect addition to the Brightening Day Protection cream. The brightening booster with hexylresorcinol supports the targeted brightening of hyper-pigmentations and provides a consistent, flawless complexion.

Brightening Mask

Prof. 150 ml Ref. 3400P



The skin brighteners and antioxidants take effect during the mask application. The creamy facial mask additionally improves cell cohesion and smoothes the surface of the skin. The skin's moisture balance is noticeably optimized and maintained for a number of hours. With isostearyl-isostearate (ISIS), SORR, lipoamino acid and liquorice root extract.

Dark Circle Eye Cream

Retail 15 ml Ref. 3360

Prof. 30 ml Ref. 3360P



Eye care cream with immediate and lasting results against dark eye circles. A powerful 4 in 1 complex of active ingredients for the eyes, made from a tri-peptide in combination with a micro algae extract, panthenol and short chain hyaluronic acid, making dark circles, lines and wrinkles look significantly improved.

2-Phase Melafadin Concentrate

Retail 4 x 10 ml Ref. 3370



Highly-effective 2-phase active substance concentrate. 4 ampoules for a six-week course of treatment. The rapidly absorbed concentrate enhances the effect of all Fair Skin products. The practical applicator additionally helps to precisely treat pigmentation flecks. The complexion continuously appears brighter and is left looking flawlessly beautiful again. With vitamin C phosphate plus lipoamino acid, SORR and mulberry tree root extract.



dermatest® confirms:

2-Phase Melafadin Concentrate:
14.8% skin brightening*

Effective ingredients in this line:

- Vitamin C
- Hexylresorcinol
- Plant extract SORR
- Lipoamino acid
- Powerful 4 in 1 complex of active ingredients for the eyes



TIP FOR PROFESSIONALS

Brighten your client's skin in a visible, even way with FAIR SKIN 2-Phase Melafadin Concentrate combined with ongoing home care. The visible results will ensure repeated bookings and customer loyalty.



* After an 8-week period of application in comparison with untreated skin.

ALL SKIN NEEDS

SPECIAL CARE FOR EVERY SKIN TYPE

Every client has their own individual needs, wishes and problems. With ALL SKIN NEEDS products, you can offer your clients an individual solution outside of the classic series based on skin types and conditions.

ALL SKIN NEEDS SERIES are also suitable for demanding and problematic skin conditions. Simple, clear, solvable based on over 25 years of JANSSEN COSMETICS expertise.

Highlights in your salon? INDIVIDUALLY PUT TOGETHER FOR YOU!



Skin Resurfacing Balm

Retail 75 ml Ref. 2300
Prof. 150 ml Ref. 2300P



Cream for calming stressed skin after intensive exfoliation or laser treatments. With Echinacea purpurea. Distribute gently over cleansed skin and massage in several times per day.

Dark Spot Perfector

Retail 30 ml Ref. 2330



A serum that specifically brightens age spots. Contains an active-ingredient complex made from garden cress and soya that has been proven to reduce the development of melanin and lipofuscin and that specifically brightens pigmentation marks.

Scar Cream

Retail 75 ml Ref. 2400



Cream for skin care in scarred areas. With Siegesbeckia orientalis and mango seed oil. Distribute gently over cleansed skin and massage in several times per day.

Detox Cream

Retail 50 ml Ref. 2910
Prof. 200 ml Ref. 2910P



Detox Cream stimulates the cells' native detoxification systems and ensures youthfully vital skin. The pink color content verifiably increases thanks to the highly effective active detoxification substances - polysaccharide α -glucan and avocado peptides. The complexion is left looking radiant, fresh and even. Vitamin E acetate and vitamin C isopalmitate protect the skin and prevent oxidative cell damage. The cells remain more vital and reveal this by living for longer.

Face Guard Advanced

Retail 30 ml Ref. 2831
Prof. 50 ml Ref. 2831P



UV protection concentrate, SPF 30, against premature light induced skin aging. With photostable UVA/UVB filters, Ectoin and biotechnological agents against IR-rays. Ideal for all skin types and for combining with all day care products.

Goodnight Lip Mask

Retail 15 ml Ref. 2501



Smoothing overnight mask for full supple lips. Highly effective at repairing, the lip mask allows especially dry, brittle lips to breathe again: Overnight, it fuses with the skin and delivers intensive moisturization and extremely valuable ingredients. With hyaluronic acid, phyto-extracts, shea butter.

Caviar Luxury Cream

Retail 50 ml Ref. 2600
Prof. 150 ml Ref. 2600P



Black gold for the skin: The rich luxurious cream gives the skin an extraordinary radiance. The anti-aging caviar extract delivers a smooth appearance and enhances volume. Lines and wrinkles appear padded. Natural skin regeneration is strengthened and supported.

Epigenetic Serum

Retail 10 ml Ref. 2931
Prof. 15 ml Ref. 2931P

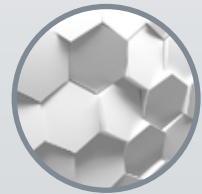


Recent scientific studies show our genes don't determine everything. Gene activity is governed by lifestyle and intake – both through diet and through the active ingredients we apply to our skin. Epigenetic Serum contains an anti-aging ingredient that minimises epigenetic skin cell alteration caused by external influences and improves skin cell vitality and stress resistance. The result: Your skin becomes more resistant to the ravages of time, maintaining your youthful radiance.



TIP FOR PROFESSIONALS

ALL SKIN offers you highlight products that can be individually combined to give your salon an absolutely unique position!



DEMANDING SKIN

YOUTHFUL FRESHNESS AND VITALISATION FOR DEMANDING SKIN

Instant impact and visible effects combined with vitalising luxurious treatments and ampoules under specially designed Dermafleece Masks deliver outstanding results and price performance. Allow the active ingredients to work deeply against the first signs of skin aging and offer your client youthful freshness again. Your client gains a radiant complexion. You gain a satisfied client.

FRESH EFFECT, RADIANT CLIENT

With DEMANDING SKIN, you will win over your demanding client: Put together your treatment individually – as always with JANSSEN COSMETICS. Let your clients enjoy products for home care. Sales are therefore guaranteed.

DEMANDING SKIN NEEDS SPECIAL ATTENTION:

With DEMANDING SKIN, you can help your client shine again.



Brightening Face Cleanser

Retail 200 ml Ref. 0000
Prof. 500 ml Ref. 0000P



Rich cleansing lotion for demanding skin. Leaves the skin feeling pleasant and ensures ideal cleansing results. With mulberry tree extract and active washing substances.

Brightening Face Freshener

Retail 200 ml Ref. 0001
Prof. 500 ml Ref. 0001P



Alcohol-free facial tonic for demanding skin. Refreshes the skin after cleansing with Brightening Face Cleanser. With mulberry tree extract and glycerin.

Intensive Face Scrub

Retail 50 ml Ref. 0007
Prof. 200 ml Ref. 0007P



Cream peeling for demanding skin. Natural abrasive particles ensure that the surface of the skin is noticeably and visibly smoothed. With finely ground peach granules.

Rich Nutrient Skin Refiner

Retail 50 ml Ref. 0010
Prof. 150 ml Ref. 0010P



Smoothing care cream with SPF 15 for demanding skin. Ensures visible improvement of the skin structure and protects against premature skin aging. With oat extract and hyaluronic acid.

Optimal Tinted Complexion Cream

Retail 50 ml Ref. 0011
Prof. 100 ml Ref. 0011P



Tinted day protection cream with SPF for demanding skin. Leaves the complexion looking fresh and youthful. With moisture retention complex obtained from natural sugars.

Lifting & Recovery Cream

Retail 50 ml Ref. 0021
Prof. 200 ml Ref. 0021P



Rich lifting cream with immediate effect for demanding skin. Ensures increased resilience and elasticity, and acts to combat premature skin aging. With oat extract and vitamin A palmitate.

Vitaforce C Cream

Retail 50 ml Ref. 0022
Prof. 200 ml Ref. 0022P



Caring active substance cream for improving the appearance of wrinkles and age spots. Refreshes and supplies long-lasting moisture. Leaves the skin smooth and more even, and improves its radiance. With vitamin C phosphate, vitamin E acetate, hyaluronic acid and lemon extract.

Vitaforce C Skin Complex

Retail 30 ml Ref. 0031
Prof. 50 ml Ref. 0031P



Caring active substance concentrate for improving the appearance of wrinkles and age spots. Refreshes and supplies long-lasting moisture. Leaves the skin smooth and more even, and improves its radiance. With vitamin C phosphate, lemon extract and hyaluronic acid.

Rich Energy Mask

Retail 50 ml Ref. 0041
Prof. 200 ml Ref. 0041P



Rich cream mask for demanding skin. Soothes and reduces wrinkles caused by dryness. For noticeably smoother skin and a visibly improved complexion. With apple stem cell extract, hyaluronic acid and ISIS.

Rich Eye Contour Cream

Retail 15 ml Ref. 0061
Prof. 30 ml Ref. 0061P



Smoothing, high-quality eye care for demanding skin. Protects and cares for the sensitive eye area. With macadamia oil, vitamin A palmitate, hyaluronic acid and oat extract.

Firming Neck & Décolleté Cream

Retail 50 ml Ref. 071
Prof. 150 ml Ref. 071P



Neck and neckline cream for demanding skin. Lines are reduced, the skin is left looking visibly smoothed. With oat extract and hyaluronic acid.

Effective ingredients in this line:

- Morus Alba
- Long and short-chain hyaluronic acid
- Oat extract
- Yeast extract
- Vitamin C phosphate



TIP FOR PROFESSIONALS

Why not try an Anti-Wrinkle Booster ampoule followed with a lifting massage and effective, activating Dermafleece Mask.

Your customer's skin will appear radiantly youthful and refreshed!



MATURE SKIN

AN ANTI-AGING HIGHLIGHT IN YOUR SALON

MATURE SKIN is the innovative anti-aging series with powerful active ingredients from the house of the cosmeceutical experts. The modular system care for the special requirements of mature skin reactivates the skin's natural renewal process and removes of any small optical blemishes. MATURE SKIN leaves no sign of skin aging unaddressed.

The powerful active ingredients of the CELLULAR REGENERATION COMPLEX (CRC) comprehensively regenerate mature skin and strengthen the skin's structure. Red clover extract alleviates wrinkles, firms the skin and moisturises. Kombucha, a multi-active ingredient from fermented black tea boosts radiance.

**Successful JANSSEN COSMETICS
salons choose to work with this
cosmeceutical series:**

MATURE SKIN IS PURE ANTI-AGING!



Multi Action Cleansing Balm

Retail 50 ml Ref. 1100
Prof. 100 ml Ref. 1100P



Luxurious cleansing balm with a transforming texture for mature skin. The delicate cream-gel texture combines four application possibilities in one formula; it can be used as a cleansing lotion, make-up remover, moisturising mask and as an SOS balm for particularly dry skin areas. With Murumuru butter, apricot kernel oil and evening primrose oil.

Micellar Skin Tonic

Retail 200 ml Ref. 1101
Prof. 500 ml Ref. 1101P



The alcohol-free facial tonic, with innovative micellar technology for mature skin. With the aid of micelle technology, the last traces of make-up and cleansing products are spherically encapsulated and then gently removed from the skin. Saccharide isomerates and long-chain hyaluronic acid provide the skin with moisture, whilst also giving the skin a lovely sensation of freshness.

Skin Refining Enzyme Peel

Retail 50 ml Ref. 1107
Prof. 150 ml Ref. 1107P



Enzyme peeling for mature skin. Highly-effective enzymes remove excess hard skin and visibly smooth away lines and wrinkles.

Perfect Lift Cream

Retail 50 ml Ref. 1110
Prof. 150 ml Ref. 1110P



Skin-smoothing anti-aging cream for mature skin with the Cellular Regeneration Complex of red clover extract and Kombucha. The high-performance complex ensures a comprehensive regeneration of the skin, smooths it and enhances its radiance. Short and long-chain hyaluronic acid provides intensive moisture and immediately makes the complexion look more toned.

Skin Contour Cream

Retail 50 ml Ref. 1117
Prof. 150 ml Ref. 1117P



Lifting care cream with a rich texture. For visibly firmer facial characteristics. Leaves the skin looking smooth and even. With elastin-stimulating peptides, genuine Japanese silk, short and long-chain hyaluronic acid, macadamia nut oil, vitamin E acetate, plant extracts.

Rich Recovery Cream

Retail 50 ml Ref. 1120
Prof. 200 ml Ref. 1120P



Rich anti-aging cream for mature skin with the Cellular Regeneration Complex of red clover extract and Kombucha. The high-performance complex ensures a comprehensive regeneration of the skin, it smooths and enhances its radiance. In areas with dry skin, a lipid complex balances out moisture supply gaps and strengthens the barrier function.

Age Perfecting Serum

Retail 30 ml Ref. 1130
Prof. 50 ml Ref. 1130P



Skin-smoothing active ingredient serum for mature skin with the Cellular Regeneration Complex of red clover extract and Kombucha. The high-performance complex ensures an extensive regeneration of the skin. The serum smooths and improves radiance. The highly-concentrated formula for during the day is the ideal complement to the Mature Skin care creams. With hyaluronic acid, vitamins C and E and stem cells from the alpine rose.

Night Recovery Serum

Retail 30 ml Ref. 1131



The active ingredient serum supports the night-time regeneration of mature skin. With the Cellular Regeneration Complex of red clover extract and Kombucha, hyaluronic acid, silk acacia extract and stem cells from the Alpine Rose. The high-performance Cellular Regeneration Complex ensures comprehensive regeneration, smooths the skin and enhances its radiance. Silk acacia extract reduces the signs of tiredness.

Rejuvenating Mask

Retail 50 ml Ref. 1140
Prof. 200 ml Ref. 1140P



Skin-smoothing cream mask for mature skin with the Cellular Regeneration Complex of red clover extract and Kombucha. The high-performance complex provides comprehensive regeneration, smooths the skin and enhances its radiance. The combination of Sensitive Complex and Bisabolol calms and ensures soothing relaxation. Hyaluronic acid provides moisture and leaves your complexion instantly more toned.

Tri-Care Eye Cream

Retail 15 ml Ref. 1160
Prof. 30 ml Ref. 1160P



Highly-effective eye care cream for mature skin with the Cellular Regeneration Complex of red clover extract and Kombucha. Which ensures a comprehensive regeneration of skin, smooths it and thus reduces the signs of fatigue and stress. In addition, the contained sensitive complex counteracts dark rings and any swelling under the eyes. Optical diffusers scattered the light.

Isoflavonia Relief

Retail 50 caps Ref. 1170
Prof. 150 caps Ref. 1170P



Antioxidant care capsules for effective protection against free radicals. With isoflavones from soya, grape seed extract, Mountain everlasting flower extract, hyaluronic acid, ginseng and marsh pennywort.

Instant Lift Serum

Retail 30 ml Ref. 1190
Prof. 50 ml Ref. 1190P



Immediately-effective lifting power serum for mature skin. The highly-concentrated formula with the Cellular Regeneration Complex of red clover extract and Kombucha, together with marine collagen, gives the skin a new radiance and freshness in just a few minutes, whilst also ensuring comprehensive regeneration for the skin.

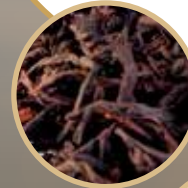
Effective ingredients in this line:

- Cellular Regeneration Complex combining Red Clover extract and Kombucha
- Long and Short-Chained Hyaluronic Acid
- Plant Stem Cells from Alpine Rose
- Macadamia Oil and Squalane
- Elastin-stimulating peptides



YOUR RESPONSE TO AGING

Only the best choose to work with MATURE SKIN. At the cutting edge of dermatology. With instantly successful treatments, repeat bookings are guaranteed together with strong product sales. You can now offer your clients the perfect anti-aging treatment of the future.



PLATINUM CARE

PURE LUXURY IN YOUR SALON

A top-class luxury experience that your sophisticated and demanding client will appreciate. JANSSEN COSMETICS has developed PLATINUM CARE in its selected laboratories specially for this group of clients. Featuring the finest ingredients currently available in cosmetics.

PLATINUM CARE is pure luxury for the skin and launches a new era in anti-aging care!

PLATINUM CARE MAKES YOU STAND OUT FROM YOUR COMPETITION

Surround yourself with the flair of an absolutely prestigious series. For an excellent price-performance ratio with top value: Platinum, one of the rarest and most valuable raw materials of the world, represents exceptional luxury and pure elegance. Platinum has now been combined by JANSSEN COSMETICS with state-of-the-art, highly effective anti-aging active ingredients.

An absolutely unmistakable luxury experience for the skin and senses plus the most effective anti-aging effect.

LET LUXURY SINK IN to your salon



DAY CREAM

Retail 50 ml Ref. 1210
Prof. 100 ml Ref. 1210P



The luxurious texture supplies the skin with highly-active anti-aging active ingredients throughout the day. The innovative Platinum-MP-Complex gives the skin a better all-round structure, improved tone and youthful radiance.

NIGHT CREAM

Retail 50 ml Ref. 1220
Prof. 100 ml Ref. 1220P



The skin's own regeneration processes are especially active during the night. The premium anti-aging Night Cream supports the skin in this process. The regenerative formula supplies the skin with highly-active anti-aging active ingredients throughout the night. The innovative Platinum-MP-Complex is extraordinarily effective at filling lines. The skin's texture is verifiably smoother, lines are filled from the inside and the skin's substance sustainably built up.

EFFECT SERUM

Retail 30 ml Ref. 1230
Prof. 50 ml Ref. 1230P



The toning Effect Serum gives the skin noticeable smoothness and youthful radiance straight away. The ultra-light luxury formula supplies the skin with a synergetic combination of skin-toning active ingredients and intensive moisturisers.

EYE CREAM

Retail 15 ml Ref. 12600
Prof. 30 ml Ref. 1260P



The premium anti-aging eye cream provides the eye area with highly-active anti-aging active ingredients around the clock. The Platinum-MP-Complex – a combination of colloidal platinum, Matrixyl™ Synthe'6™ and silk acacia extract – comprehensively improves the skin's structures and enhances tone.

BRILLIANCE SHINE ELIXIR

Retail 7x2 ml Ref. 1290
Prof. 25x2 ml Ref. 1290P



Brilliance Shine Elixir is a highly-concentrated active ingredient ampoule that immediately compensates for signs of fatigue on the skin. The specially-developed fluid with precious Persian silk tree extract, Matrixyl™ Synthe'6™ and hyaluronic acid moisturises the skin intensively, giving it a fresher appearance and invigorated radiance.

Effective ingredients in this line:

- Platinum-MP-Complex of Colloidal platinum, Matrixyl™ Synthe'6™ and silk acacia extract
- Gatuline® Expression: Reduces the intensity of muscle contractions in the face, relaxing small lines
- Instensyl® :
For a toning effect that can be seen and felt immediately
- Vitamin E Acetate
- Macadamia Oil and shea butter



TIP FOR PROFESSIONALS

The luxury treatment in your treatment room:
A special treatment with PLATINUM CARE for deep relaxation and simultaneous intensive deep effect.
Exclusive anti-aging for body and soul.



MAKE UP

RADIANT, NOURISHING, ELEGANT

Indispensable for your treatment room: Your client wants to be able to rely on top quality, especially when it comes to high-quality make-up for special occasions such as bridal or festival day make-up.

Professional camouflage that can be mixed to suit every skin tone, set with perfect fixing powder to become smudge proof and waterproof, giving your client confidence and a fantastically even skin tone that is reliable.

Present the ANTI-AGING DIFFERENCE compared to conventional make-up.



Perfect Radiance Make Up

Retail 30 ml

Ref. 8700.00 - 04



Perfect Radiance Make-up contains special coated pigments based on amino acids. These make it easy to spread, ensure its colour remains consistent and enable it to bond to the skin extremely well. At the same time, light-reflecting pigments give the skin an even, flawless complexion and a velvety finish. An innovative film former holds the cosmetic in place for hours. Perfect Radiance Make-Up offers wearers a perfect combination of tinting and nourishment. Important anti-aging active substances such as hyaluronic acid moisturise the skin and reduce wrinkles. In addition, UVA and UVB filters provide reliable protection from photoaging. The foundation is easy to apply and leaves the skin feeling uniquely pleasant. Perfect Radiance Make-Up is available in four graduated colours.

00

01

02

04

Eye Make Up Remover

Retail 100 ml Ref. 8800

Prof. 200 ml Ref. 8800P



Oil-free cleansing gel for all skin types for thoroughly and gently removing eye and lip make-up. The oil-free formulation removes even water-resistant make-up.



Perfect Cover Cream

Retail 5 ml
Ref. C-840.01 - .06



Special, highly-concealing camouflage cream. Available in five different color choices, from light to dark, for perfect adaptation to the skin's relevant shade. The color tone should be determined in daylight if possible and is often achieved by individually mixing two or three shades of color.

01

02

03

04

05

Perfect Powder Fixing

Retail 30 g Ref. C-841



Special fixing powder is used to make the camouflage cream water-resistant and virtually smudge proof. With the camouflage fixed in place showering, swimming, wind and rains have little effect on the fantastic coverage.



TIP FOR PROFESSIONALS

Absolutely professional:
Use the PERFECT COVER CREAM
with its camouflage effect to cover
up dark circles, scars and
hyperpigmentation.



MEN

Prestigious skin care for him.

MEN by JANSSEN COSMETICS offers effective solutions for well-groomed, healthy and resilient skin.

High-quality active ingredient combinations and exclusive formulas have been perfectly blended in our research laboratories and formulated to meet the particular needs of male skin: The skin absorbs the products in the MEN range immediately, which allows them to develop their powerful effects deep down. Satisfying grooming products with results you can see and feel.

Purifying Wash + Shave

Retail 75 ml Ref. 8600



Smooth, creamy foam for effective deep cleansing and a gentle shave. Instantly cleanses and refreshes the skin, soothes it during shaving and makes it feel fresh and smooth.

Calming Hydro Gel

Retail 50 ml Ref. 8610



Extremely refreshing and gentle after-shave skincare. Soothes irritated skin after shaving and also intensively moisturises it. This revitalising cream gel with an exclusive active ingredient formula is immediately absorbed and has a soothing and extremely refreshing effect: Guaranteed reactivation and revitalisation.

24/7 Skin Energizer

Retail 50 ml Ref. 8620



Pleasant daily skincare product with anti-aging effect: An immediate maximum moisture and active ingredient booster that leaves the skin looking visibly softer. The luxury formula with Men's SuperMoist and SPECIMEN strengthens and activates the skin around the clock. Fine lines and wrinkles are far less noticeable. 24/7 Skin Energizer – for healthy masculine skin and a dynamic look.

Energizing Eye Roll-On

Retail 15 ml Ref. 8660



New energy and freshness for tired eyes: This powerful 4-in-1 active ingredient complex revitalises and instantly cools the skin, visibly reducing swelling and dark rings under the eyes. Fine lines and wrinkles quickly look less noticeable.

Long Lasting Deodorant

Retail 30 g Ref. 8678



Long Lasting Deodorant has a long lasting mild and spicy fragrance. At the same time, our deodorant stick is very gently on the skin as the formula was developed without alcohol. Unlike other deodorants which only cover up one smell with another, Long Lasting Deodorant actually eliminates body odours.

MEN

powerful | anti-aging | effective

Prestigious skin care for him



The choice of care and special preparations is oriented towards the men's individual skin needs.
The relevant treatment scheme leads to optimal care success in the salon:

SUN

Measurable sun protection and in-depth skin care at the same time

The SUN series from JANSSEN COSMETICS enables pleasurable bronzing whilst enjoying twofold sun protection:

1. Innovative photo stable light protection filters offer highly-effective protection against UVB and UVA radiation.
2. The unique biological active substance ectoin® increases the cell's native defenses against UV radiation and loss of moisture.

Ectoin® is a natural substance which is found in the deserts and salt lakes of Egypt. It penetrates into the skin easily due to its low molecular weight and protects it against stress factors such as heat, cold and UV light by supporting the cells' own repair and protection mechanisms. This increased protection against UV radiation also reliably contributes towards the avoidance of premature photo-aging (light-related skin aging). Furthermore, ectoin® regulates the cells' natural moisture content and prevents them from drying out.



Sun Shield SPF 30

Retail 150 ml Ref. 8830



Sun Shield SPF 30 contains intensified sun filters with "high" sun protection. The additional cell protection factor ectoin® cares for and protects sun-sensitive skin. The use of Sun Shield SPF 30 is tententially recommended for skin type I: very light skin, lots of freckles, very fair or strawberry blond hair, light eyes.

Sun Shield SPF 50

Retail 75 ml Ref. 8850



With its ultra-strong sun filters, Sun Shield SPF 50 offers "high" sun protection and protects the skin against unwelcome hyperpigmentation. Further advantages include its easy distribution. Generous application of Sun Shield SPF 50 is recommended for skin type I: very light skin, lots of freckles, very fair or strawberry blond hair, light eyes.

After Sun Lotion

Retail 200 ml Ref. 8890



After Sun Lotion contains highly-effective natural substances which eliminate skin irritation and balance out moisture deficits. The cooling effect is fast and reliable. The skin is prevented from sloughing off prematurely – a precondition for long-lasting and even bronzing.



The SUN series products offer measurable sun protection and in-depth skin care at the same time

Innovative photo stable light protection filters offer highly-effective protection against UVB and UVA radiation.

The unique biological active substance ectoin® increases the cell's native defenses against UV radiation and loss of moisture.

The skin's self-protection time (depending on skin type) and the specified sun protection factor are used to calculate the light protection time. One factor is multiplied with the other.

Example: Normal, unprotected skin reddens after about 10 minutes of intensive exposure to the sun. SPF 30 provides sun protection which is 30 times higher:
 $10 \text{ minutes} \times 30 \text{ SPF} = 300 \text{ minutes of UV protection.}$

After that, the sun protection is exhausted and withdrawing to a sun-free area is recommended.

The following always have to be observed:

- Prevent the product from coming into contact with the eyes and mucous membranes.
- Allow the sun protection to work in completely to prevent e.g. discoloration of textiles.
 - Apply before sunbathing (approx. 30 min.).
 - Avoid the intensive midday sun.
- Apply several times to maintain sun protection.
- Protect babies and young children from direct exposure to the sun.
- Use protective clothing and sunscreen products with a very high sun protection factor (SPF of over 30) for babies and young children.



BODY

EFFECTIVE PROBLEM-SOLVER FOR THE BODY

Products from the BODY SERIES have been awarded the PRIX DE L'INNOVATION: You will find the correct effective product with long-term impact for every wish. Firming, boosting circulation, strengthening, shaping and lifting.

From size zero to the queen of curves: Innovative active ingredients combat problem areas and guarantee your clients a shapely silhouette with noticeably firmer contours.

JANSSEN COSMETICS offers you a complete, customisable treatment programme. With full body masks, packs, massage creams, wraps – we provide everything that a professional salon needs.

Award-winning compounds and treatment concepts
FOR YOUR STUDIO'S SUCCESS



Oxygenating Body Scrub

Retail 200 ml Ref. 7000
Prof. 1000 ml Ref. 7000P



After the peeling, the skin is smoothed, the circulation stimulated and the skin's ability to absorb subsequent active substances increased. Oxygenating Body Scrub possesses stimulating and caring contents from algae and plankton extracts. The mineral and trace element contents lend the skin perceptible smoothness.

Body Toning Modelage

Prof. 500 ml Ref. 7510P



Active substances and special care concentrates are better absorbed by the skin following pretreatment with Body Toning Modelage. This is a particular advantage, especially during cellulite and lifting treatment. Application: For a full or partial body treatment, distribute Body Toning Modelage over the body's skin and massage. Then wash your hands. **Note:** The increase in circulation may lead to an intensive sensation of heat erythema and/or itching.

Body Sculpturing Massage "Tuscany"

Prof. 1000 ml Ref. 7580P



The rich massage cream with Q10 is ideally suitable for carrying out intensive partial or full body massages with the objective of stimulating the micro, blood and lymphatic circulation in such a way that accumulations of fluid are mobilized. The cardiovascular system and lymphatic flow are activated and the body's functions revived in this manner. Unattractive "dimples" disappear; the skin is left looking smooth and supple.

Dead Sea Black Mud "Al Nadara"

Prof. 4x500 g Ref. 7687P



Dead Sea Black Mud "Al Nadara" originates 100% from the Dead Sea. Thanks to its astringent and absorbent properties, the mud has a cleansing and smoothing effect on the structure of skin and hair. Even stressed joints are provided with rapid relief. Application: Cover the treatment couch with film. Generously apply the mud onto the areas of the body to be treated using the hands. Seal the film to form a body wrap. Rinse residues off under the shower or simply remove using moist, warm compresses after allowing the pack to work in for approx. 20 minutes.

Multi Action Algae Pack "Brittany"

Prof. 4 kg Ref. 7688P



The algae body pack is a fine powder mixture consisting of brown and red algae. It is simply mixed with water to form a smooth paste and can be used to treat the entire body. Multi Action Algae Pack "Brittany" is a sensible addition for the effective treatment of cellulite. The skin's native regeneration process is sustainably supported. The skin is left feeling perceptibly firmer, smoother and more supple after each application. Application: Cover the treatment couch with film. Apply the pack onto the body using a brush. Seal the film to form a body wrap. Rinse residues off under the shower or simply remove using moist, warm compresses after allowing the pack to work in for approx. 20 - 30 minutes.

Cryogenic Alginate "Arctic"

Prof. 4 x 150 g Ref. 7690P



Cryogenic Alginate "Arctic" is a multifunctional, algae-based peel-off mask. During application, this soft modeling is transformed into a plastic surface film and shapes the contours of the bust and legs in an impressive manner. Application: Cover the treatment couch with film. Mix 1 sachet (150 g) with 300 ml water (approx. 20°C) to form a smooth paste and immediately distribute over the bust and neckline. After allowing the product to work in for approx. 20 minutes, peel the mask off in one piece.



TIP FOR PROFESSIONALS

Use the range of special BODY treatments for your salon: "Cellulite Aid", "Volumise and Lift" and "Vital & Fit" are luxurious treatments with accelerated effects.





Body Contour Booster

Retail 150 ml Ref. 7801
Prof. 300 ml Ref. 7801P



Cellulite is not your destiny. With the right combination of intensive care, sport, nutrition and discipline, you can combat cellulite and fat cells. Body Contour Booster is a refreshing, thermoactive gel with an innovative formula that cares for your figure. The mustard sprout extract and capsaicin contained in the Cellu-Slim Complex have been shown to reduce cellulite and create a slimmer silhouette. Cellu-Slim Complex stimulates the conversion of fat-storing cells into fat-burning cells. Clinical studies carried out over 8 weeks have confirmed the fast-acting, strong and visible slimming and anti-cellulite effects of the complex.

Perfect Bust Formula

Retail 75 ml Ref. 7700
Prof. 200 ml Ref. 7700P



In addition to the genetically related aging process JANSSEN COSMETICS implements a holistic treatment concept: 1. Smoothing of the surface of the skin and improvement of firmness, 2. Improvement of elasticity and 3. Increase in volume.** This lifting bust care contains quince, green algae, white lupines and mangosteen.

Vitaforce ACE Body Cream

Retail 200 ml Ref. 7240



This is a silky smooth body cream enriched with the three most valuable vitamins, vitamins A, C and E, as well as shea butter, hyaluronic acid and Pentavitin®.

Stretch Mark Cream

Retail 200 ml Ref. 7230



Longitudinal, initially slightly raised, bluish to brown-red marks may occur due to excessive stretching of the skin or hormonal influences which reduce the skin's elasticity. Over time, these are transformed into flat and pale scars. Stretch Mark Cream is a smooth active substance lotion which develops a pleasantly cooling effect immediately following application. Pregnancy and stretch marks pale when applied regularly. With Siegesbeckia orientalis, mango seed oil, vitamin C phosphate and vitamin E acetate.

Hand Care Cream

Retail 75 ml Ref. 7210



Hands reveal a person's true age. As an uncovered part of the body, the hands are regularly exposed to the influences of wind and weather. Hand Care Cream combats chapped, irritated and reddened hands with active substances which have long been highly regarded in the field of herbal remedies. In the long-term, a protective film is built up in the sense of an invisible glove. With echinacea, chamomile and farnesol.

Body Lotion "Isoflavonia"

Retail 200 ml Ref. 7900



All women desire youthfully soft and firm skin from head to toe. Body Lotion Isoflavonia ensures smooth and supple body skin in the long-term. The isoflavones which are contained act to combat hormonally-related collagen and elastic fiber breakdown and promote the skin's supportive strength in the upper layers of tissue. Feminine contours are harmoniously defined with extra anti-aging active substances. With iris root extract, kombucha, mango butter, vitamin E acetate and allantoin.





PROFESSIONALS

Success begins in the treatment room: Unique treatments to ensure you stand out from the competition and retain long-term customers are an absolute must.

That's why our team of experts develop highly effective, state-of-the-art treatment room concepts based on the special JANSSEN COSMETICS methods. Individually tailored to all the different skin types and skin conditions.

From immediate solutions with skin problems through impact treatments to luxurious pleasure and wellness treatments.

YOUR TREATMENT ROOM WILL BE DIVERSE AND CUSTOMER-FOCUSED

The building block principle by JANSSEN COSMETICS also allows you to freely select your individual methods and beauty products for your salon.

The treatment room is the best place to sell products. We help you here too: Together, we test the best and most profitable methods for making your treatment room even more successful.

The right solution for every customer: An exceptionally diverse range of products for treatment rooms for you to combine as you wish LIVING BEAUTY THROUGH COSMECEUTICALS

YOUR TREATMENT ROOM PRODUCTS

What can JANSSEN COSMETICS help you achieve in your treatment room? Show your client:

This building block concept offers a true change to the treatment room, with an excellent variety of various special products for keeping the skin healthy. This allows you to organise your personal treatment concept. Or simply apply our globally successful treatment concepts based on our recommendations.



EXFOLIATION SYSTEM

Effective skin renewal with fruit acids

JANSSEN COSMETICS has developed the highly effective "Exfoliation System": Here, fruit acids work effectively on the skin surface with instantly visible results.

Instant and effective impact – the perfect preparation for your subsequent treatment with our cosmeceuticals, concentrates, creams and masks. This professional treatment system may only be used by trained JANSSEN COSMETICS partners.



Cleanser

PP 250 ml Ref. 5700P



Cleansing lotion (pH 4.2) with glycolic acid, salicylic acid and fruit acids. Apply onto the face, neck and neckline and massage in gently. Then remove with lukewarm compresses. Avoid contact with eyes or mucous membranes. Wash off immediately in the event of skin intolerabilities. Do not allow to work in for longer than 3 – 5 minutes.

pH Neutralizer

PP 250 ml Ref. 5710P



Gel with alkaline pH value of 8 for neutralizing acid-treated skin. Apply onto the skin with a brush. Pay particular attention to the wings of the nose and corners of the mouth. Allow to work in for approx. 1 minute until tingling is no longer noticeable. Then remove thoroughly. Neutralize a second time if necessary.
Attention: avoid contact with eyes or mucous membranes.

Exfoliator 20

PP 50 ml Ref. 5720P



Peeling gel (pH 4.2) with glycolic acid and fruit acids (20%). Apply onto cleansed skin with a brush.
Time required to work in: 3 to 20 minutes max.
Wash off. Then apply pH Neutralizer.

Exfoliator 30

PP 50 ml Ref. 5730P



Peeling gel (pH 3.6) with glycolic acid and fruit acids (30%). Apply onto cleansed skin with a brush.
Time required to work in: 3 to 15 minutes max.
Wash off. Then apply pH Neutralizer.

Exfoliator 40

PP 50 ml Ref. 5740P



Peeling gel (pH 3.6) with glycolic acid and fruit acids (40%). Apply onto cleansed skin with a brush.

Time required to work in: 3 to 8 minutes max. Wash off. Then apply pH Neutralizer.

Exfoliator 60

PP 50 ml Ref. 5760P



Peeling gel (pH 3.6) with glycolic acid, salicylic acid and fruit acids (60%). Apply onto cleansed skin with a brush.

Time required to work in: 3 to 5 minutes max. Wash off. Then apply pH Neutralizer.

Attention:

Must only be used as described in manufacturer's instructions.

Apply only on intact skin. Do not undertake any depilation prior to the application of fruit acids. Do not allow products containing fruit acids to get into the eyes or onto mucous membranes.

In the event of skin intolerabilities, wash off immediately and then treat with pH Neutralizer. The skin reveals increased sensitivity to light after peeling; it is therefore vital to apply high UV protection, e.g. Face Guard plus, over the coming weeks.

Store out of the reach of children – for external application only.

For professional application only.

It is vital to observe the relevant Exfoliator's individual exposure time. The exposure time is precisely stated in the product description and is dependent on the concentration of the Exfoliator and the skin condition to be treated. Please remain with your customer in the beauty salon during the exposure time so that you can immediately wash the product off from the skin and then neutralize the skin in the event of undesired side-effects.

Methodical treatment with EXFOLIATION SYSTEM is only intended for professional use in the beauty salon. Optimum results are achieved if application is carried out as a course of treatment over a period of 4 weeks:

1st week: Exfoliator 20

2nd week: Exfoliator 30

3rd week: Exfoliator 40

4th week: Exfoliator 60

2 treatments can be performed during each treatment week.

The Exfoliator concentration increases from week to week in order to slowly accustom the skin to the fruit acids and avoid irritation caused by the higher concentration Exfoliator.

Depending on treatment objective, the repetition of 1-2 cycles is possible.

The individual treatment sequence always remains identical.



AMPOULES

Instant remedies from effective, intensive concentrates

A vast range of 12 different ampoules, precisely tailored to each individual skin requirement and condition. Hyaluron is an active ingredient which optimally complements the high-quality ampoule formulas! All ampoules penetrate the skin easily and can be enhanced through iontophoresis and ultrasound.

Application: Break off the top of the ampoule, protecting your hands with a paper tissue, and pour the entire content into the palm of your hand. Then apply evenly over the face and neck, and press in gently. For external use only!

***Application note:** Application with iontophoresis only if the skin condition permits. Product electrode polarity: NEGATIVE (-), duration: 3-5 minutes.



Hyaluron Fluid

Retail 7 x 2 ml Ref. 1951
Prof. 25 x 2 ml Ref. 1951P



Hyaluron Fluid sustainably moisturizes "thirsty" skin. The structure of the hyaluronic acid is vitally important in this case. Whilst long-chain hyaluronic acid forms a protective film on the epidermis, the short-chain hyaluronic acid acts at a deeper level. The vast quantities of moisture which are bound here lead to a genuine lifting effect: the skin is smoothed from the inside out.*

De-Stress

Prof. 25 x 2 ml Ref. 1911P



De-Stress causes skin irritation to disappear! The oil-based ampoule concentrate soothes sensitive skin both quickly and reliably. It is colorless, odorless, resistant to oxidation and neither too light nor too oily. It is suitable for use in a gentle massage in the beauty salon. With skin defense complex, α -bisabolol, isostearyl-isostearate (shortened to ISIS) and macadamia nut oil.

Couperose Fluid

Prof. 25 x 2 ml Ref. 1921P



As couperose involves damage to the blood vessels rather than temporarily extended blood vessels, patience and discipline are necessary to achieve genuinely long-term success. Containing 5% sensitive complex, the special Couperose Fluid ampoule offers crucial assistance in achieving this. On application of an active substance solution containing just 3% sensitive complex twice per day, initial success was measurable after only 14 days: the number of visible capillaries was reduced by 20%.

Normalizing Skin Fluid

Prof. 25 x 2 ml Ref. 1941P



Serum for normalizing oily, blemished skin. Regular application of Normalizing Skin Fluid normalizes sebum gland activity, therefore leading to visible improvement of the affected skin profile. With anti-sebum active substance complex plus hyaluronic acid, aloe vera and salicylic acid.*



Stem Cell Fluid Prof. 25 x 2 ml Ref. 1995P



Stem Cell Fluid supports skin regeneration by protecting and fortifying human skin cells. The life cycle of the cells is extended in this way. Hyaluronic acid additionally strengthens the moisture retention barrier of skin which requires regeneration. With an extract from apple stem cells plus long- and short-chain hyaluronic acid.*

Anti-Wrinke Booster Retail 7 x 2 ml Ref. 1992
Prof. 25 x 2 ml Ref. 1992P



Highly concentrated anti-wrinkle serum with skin-tightening Instensyl® & Gatuline® Expression biopolymers and a hyaluronic acid complex.

Caviar Extract Retail 7 x 2 ml Ref. 1991
Prof. 25 x 2 ml Ref. 1991P



In times of increased susceptibility to stress, the facial contours appear particularly slack and tired. What is now required is a stimulant to regenerate and activate them. With its biological active substance extract, Caviar Extract offers an ideal stimulant. With hyaluronic acid plus extracts of caviar and artemia.*

Eye Flash Fluid Retail 3x1,5 ml Ref. 1900_3
Prof. 25 x 2 ml Ref. 1900P



Hydrating eye serum with hyaluronic acid and a peptide complex. The fatigued skin around your eyes will appear significantly smoother.

Skin Contour Fluid Prof. 25 x 2 ml Ref. 1917P



Skin firming concentrate with elastin-stimulating peptides which encourage elastin synthesis in the fibroblasts, strengthen the structure of the connective tissue and lift the facial contours.

Detox Fluid Prof. 25 x 2 ml Ref. 1929P



Detox Fluid contains active substances that support the skin's natural process of breaking down damaged cell components. Highly active avocado peptides ensure that proteins that are no longer needed are broken down into smaller, recyclable fragments. The cell is relieved of its cellular waste, regaining almost the same vitality as a young cell. A special kind of yeast extract rich in α -glucan also activates the process of breaking down larger oxidized proteins and lipids, including the "age pigment" lipofuscin.

Melafadin Fluid Retail 7 x 2 ml Ref. 1981
Prof. 25 x 2 ml Ref. 1981P



Melafadin Fluid is a special concentrate with effective skin brighteners which inhibit melanin synthesis at its very source, block melanin maturation and finally inhibit melanin uptake into the horny layer's cells. With lipoamino acid, vitamin C phosphate, plant extract SORR plus hyaluronic acid.



PEELING MASKS

Pure deep cleansing for genuine deep action

Guaranteed exceptional deep cleansing following classic surface cleansing. This optimally prepares the skin for immediately absorbing the intensive active ingredients:

The skin can breathe – the highly concentrated form of purely natural ingredients then allows for the further penetration of the applied active ingredient concentrates.

Enzyme Peeling Mask

Prof. 300 g Ref. 7807P



With the aid of the Enzyme Peeling Mask, the cement substance between the horny lamellae, the keratin of the horny layer itself, is dissolved. At the same time, the enzymes also penetrate between the blackhead plug and the follicle wall, thereby partially loosening or dissolving the sebum and horny mixture. As a result of this, skin impurities are effectively prevented or removed, the skin profile is refined and the skin is optimally prepared for the subsequent treatment. With kaolin, papain and bromelain.

Thermo Peel Mask Cranberry

Prof. 300 g Ref. 7570P



Peeling and care mask go “hand-in-hand” in this product. This takes place under special physical circumstances: on application, Thermo Peel Mask Cranberry has a perceptible warming effect. With a temporary “hot flash”, application of this product is a very special experience! For all skin types that want to regain new freshness and smoothness whilst ensuring protection against premature skin aging. With cranberry extract, grape seed oil, zeolith, kaolin and panthenol.





DERMAFLEECE MASKS

Select purest collagen masks

These active ingredient masks are characterised by exceptional purity: Processed into a biomatrix in a special production process, the Dermafleece masks act as both the active ingredient and its carrier.

Extreme hydration and intensive anti-irritation guarantee a highly effective treatment process for every skin type and condition.

Application: Place DERMAFLEECE MASKS onto the non-oily area of skin which is to be treated, moisten with Mask Activator and allow to work in for approx. 20-30 minutes. Finally, peel the mask off in one piece. Gently press in any moisture remaining on the surface of the skin.



Collagen Aloe Vera

Prof. 1 blister
Ref. 8104.902



Ideal for sensitive, irritated skin. This skin condition may occur in the case of both dry and rather more oily skin types. Collagen Aloe Vera has a soothing and balancing effect. The skin's hydration is optimized thanks to the high moisture binding capacity of the collagen. With collagen and aloe vera.

Collagen Allantoin & Panthenol

Prof. 1 blister
Ref. 8104.903



Fleece mask for demanding skin. Ideal in the case of light-damaged and stressed skin. The skin profile reveals a conspicuous loss of resilience, is unevenly hornified and has a tendency to form wrinkles prematurely. Collagen Allantoin & Panthenol revitalizes and effectively balances out moisture deficits. With collagen, allantoin plus panthenol.

Collagen Vitamin C

Prof. 1 blister
Ref. 8104.912



Fleece mask for demanding skin. Ideal in the case of light-damaged, prematurely aged skin, in order to avert premature light-related damage or as prophylaxis for tired, lifeless skin. Thanks to the high vitamin C content, the formation of new collagen fibers is stimulated and collagen breakdown is slowed down. At the same time, the moisture content is increased and the skin is visibly smoothed. With collagen plus vitamin C phosphate.

Collagen Caviar Extract

Prof. 1 blister
Ref. 8104.913



The fleece mask has a moisturizing effect, protects the collagen and elastic fibers and clarifies the facial contours, leaving the skin looking velvety. Caviar extract stimulates the formation of new cells, is an ideal radical scavenger and promotes the skin's microcirculation. With collagen plus caviar extract.

Collagen Fair Skin

Prof. 1 blister
Ref. 8104.917

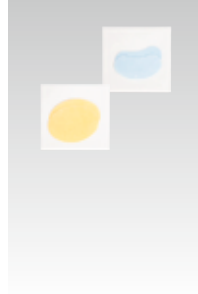


Collagen Fair Skin's active substances support skin brightening and simultaneously mobilize the defensive system. This enables damage caused by stress factors such as UV light, dryness and heat to be effectively prevented and premature light-induced skin aging to be avoided. With collagen, alpha arbutin, citric acid, liquorice root extract, Ectoin® plus grape seed extract.

COLLAGEN EYE

Eyelid Mask (bean)
Eye Pad (oval)

Prof. 1 blister
Ref. 8106.901
Ref. 8109.901



Lyophilized fleece mask consisting of pure, native collagen. Ideal for specific treatment of the eye area. "Eye lifting" for the beauty salon. Premature wrinkles in the eye area are effectively combated. Note: Collagen eyelid mask is ideal for "crows' feet". Collagen eye pad is also ideal for the lip contours. Tip: Ideal in combination with the Lifting Effect ampoule.

Collagen Pure

Prof. 1 blister
Ref. 8104.901



The fleece mask for all skin types is outstandingly suitable both for restoring lost moisture to the skin and for improving and firming the structure of the skin tissue. The skin therefore regains added resilience and suppleness, and is left looking fresher and more recuperated. With collagen.

Collagen Hyaluron

Prof. 1 blister
Ref. 8104.915



Collagen Hyaluron counteracts the moisture deficiency of dry skin. This intense moisturizer and wrinkle filler instantly smooths and plumps up the skin. The skin-smoothing effect is visible and noticeable to the touch after as little as one application. Dryness lines are visibly reduced, and the skin takes on a firmer, more toned and fresher appearance.



PEEL OFF MASKS

Multifunctional applications, intensive effects

High-quality powder masks for an intensive impact. With the most successful natural main active ingredients on the market. Exclusively developed for treatment room application, active ingredients infiltrate the skin in an especially effective way.

They work exceptionally well when integrated into treatment processes and are optimally combined with ampoules. Multifunctional uses for facial and partial body treatments.



Dead Sea Black Mask

Prof. 10 x 30 g
Ref. P-837P



The absorbent property of the alginate mask is optimally supported by the addition of active substances obtained from Dead Sea sediment. Those skin profiles which tend to reveal blemishes, increased sebum gland activity and extended pores particularly benefit from its skin-clarifying character. The addition of tea tree oil offers effective protection against further blemishes.

Acerola Vitamin C Mask

Prof. 10 x 30 g
Ref. P-832P



Acerola Vitamin C Powder Mask vitalizes tired, lifeless skin and promotes its firmness with the fruit extracts from Acerola cherries. Vitamin C additionally stimulates collagen synthesis and promotes lifted skin from the depths.

Botanica White Mask

Prof. 10 x 30 g
Ref. P-834P



Botanica White Mask is an alginate-based powder mask. It is enriched with the high-quality herbal complex consisting of mulberry root, grape and saxifrage extracts. The enzyme activity responsible for producing melanin is extensively inhibited. Ideal in the case of hyperpigmentation such as e.g. liver spots or chloasma, etc.

Spirulina Green Mask

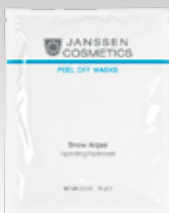
Prof. 10 x 30 g
Ref. P-831P



Spirulina Green Mask gently stimulates the metabolism thanks to its occlusive effect. Waste products and accumulated tissue fluid are rapidly transported away. A significantly improved skin profile is rapidly achieved.

Snow Algae - Hydrating

Prof. 10 x 30 g
Ref. 8350P



Peel-Off Alginate Mask: refreshing and invigorating. With moisturising snow algae extract. The contents of one pack (15 g) are suitable for one application. Combine powder with approx. 40ml (20°) drinking water using a fan brush to produce a spreadable mixture. Apply mask to the skin using a fan brush and leave it to take effect for approx. 20 minutes. Then remove the mask as a thin layer from the skin.

Aloe De-Stress

Prof. 10 x 30 g
Ref. 8355P



Aloe De-Stress mask is a soothing and moisturising mask based on the calming effect of Aloe Vera. The innovative FILMALGINE® basis of the mask (alginate, soya peptides and soya isoflavones) also has an anti-aging effect. For sensitised skin it is not only necessary to strengthen the skin's natural protection mechanism, but to also calm it sustainably and alleviate irritation.

Olive Balancing

Prof. 10 x 30 g
Ref. 8366P



Olive Balancing normalises dry and oily skin with olive oil and silica. The innovative FILMALGINE® basis of the mask (alginate, soya peptides and soya isoflavones) also has an anti-aging effect. Caring for combination skin is always a challenge because a balance needs to be found between the dry and the oily areas. Any excess oil needs to be removed, while the dry areas need to be supplied with nourishing active substances.

Goji Anti Oxidant

Prof. 10 x 30 g
Ref. 8399P



Goji Anti-Oxidant mask improves the skin's natural defensive and protective functions, while simultaneously re-energising and refreshing the skin. The mask contains extracts from the special chinese Goji berry. Goji antioxidant mask improves the skin's natural defensive and protective functions while energising and refreshing the skin. The mask contains extracts from the special Goji berry. This berry is native to China where it is referred to as the "fruit of longevity". Its high antioxidant content is the best protection against free radicals and in combination with vitamin E it forms an effective defence against premature photoaging.

APPLICATION

- 1st step: Protect the customer's hairline with tissues and headband.
- 2nd step: Apply an active substance concentrate corresponding to the skin type onto the areas of skin to be treated and press in gently. Allow to work in for a 2 - 3 minutes.
- 3rd step: Mix the peel off mask. Quickly mix 30 g powder with approx. 90 ml Mask Activator (room temperature) to form a smooth paste.
- 4th step: Evenly apply the thick mask mixture onto the face and neck in downward strokes using a spatula. Omit the mouth and eye area (or include them after consulting the customer). Allow the mask to work in for 15 - 20 minutes.
- 5th step: Simply peel the mask off downwards from the forehead. Remove the residue with moist sponges or compress.
- 6th step: Then apply the appropriate care cream.

Important note:

Please do not mix the mask over the sink or pour mask residue into the drain. Always allow mask residue to dry in the mixing bowl and dispose of in the domestic waste.



FACIAL CREAM MASKS

Naturally Fragrant Smooth Cream Treatments

Instantly ready-to-use cream masks with an especially smooth texture and fragrant natural scent. This creates an additional pleasant atmosphere whilst the active ingredients are being deeply absorbed. Suitable for every skin type, especially tailored to achieve anti-aging, soothing or revitalising skin treatment goals. Excellent in combination with the targeted ampoule.



White Tea Moisture Mask

Prof. 200 ml
Ref. 8550P



The skin's moisture balance is noticeably optimized and maintained for a number of hours. Plant-based moisturizers ensure fresher skin and smooth wrinkles caused by dryness. The white tea extract not only supplies additional moisture but also stimulates the skin's microcirculation at the same time. The polyphenol content reduces the occurrence of free radicals and protects dry and environmentally-stressed skin against cell damage.

Fruit Peel Cream Mask

Prof. 200 ml
Ref. 8540P



Fruit Peel Cream Mask refines the surface of the skin with an exotic mixture of fruit. The slightly acidic pH value (pH 4) inhibits the tendency towards blemishes and inflammation with optimal skin tolerability. Freshly formed cells appear more quickly on the surface of the skin and immediately ensure a fresher appearance. With alpha hydroxy acid (AHA), saccharide isomerate, isostearyl-isostearate (ISIS) and bisabolol.

Age Defying Cream Mask

Prof. 200 ml
Ref. 8500P



Age Defying Cream Mask maintains the youthfulness of demanding skin and cares for it, leaving the skin looking more beautiful. Highly-active peptides stimulate the production of repair enzymes in the skin. In this way, the skin is better protected against external influences such as e.g. oxidation and UV radiation. With rice extract, isostearyl-isostearate (ISIS), bisabolol and glycerin.

Lift Contour Cream Mask

Prof. 200 ml

Ref. 8510P



Lift Contour Cream Mask remodels skin which is in need of regeneration and firms it from its depths. The skin is helped at the point at which aging begins. Elastin-stimulating peptides reduce cheek sagging and leave mature skin looking considerably younger. With elastin-stimulating peptides (ESP), isostearyl-isostearate (ISIS), bisabolol and glycerin.

Pomegranate Cream Mask

Prof. 200 ml

Ref. 8560P



Pomegranate Cream Mask is the optimum instant booster for tired, drawn skin. The secret behind this vitalizing anti-aging mask is the valuable extract of pomegranate blossom, a powerful exotic fruit that has symbolized life and beauty in many cultures since time immemorial. Together with alpha bisabolol it creates an innovative combination of active anti-aging ingredients that promote collagen synthesis reduce age related reduction of collagen fibres.

Moor Cream Mask

Prof. 200 ml

Ref. 8530P



Moor Cream Mask is the cream pack with vitalizing effect. The valuable constituents of high moor peat noticeably revive the complexion. The pleasant, balsamic fragrance of dwarf pine supports the effect of improved capillary circulation and enhances the vitalizing effect in the skin. With high moor peat, allantoin and glycerin.



TIP FOR PROFESSIONALS

FACIAL CREAM MASKS are even more effective when they are used in combination with an ampoule preparation from the AMPOULES series. The classic facial treatment becomes particularly varied and is transformed into a solution-oriented power program for all skin types.



ESSENTIALS

Special products exclusively for the treatment room

Every treatment is different: From the ESSENTIALS special series, you can choose the cosmeceuticals that optimise treatment programmes for your treatment room.

Here, you will find innovative special masks, the Mask Activator for peel-off masks also special creams for after-care of treated skin.



Revigorating Face Mask

Prof. 150 ml
Ref. 5504P



Extraordinary gel mask used as a preparatory mask. Highly stimulates blood circulation resulting in increased supply of oxygen and nutrients to the skin and assists in the removal of built up toxins. Increases the absorption of active ingredients.

Thermo Face Mask

Prof. 4 x 440 g
Ref. 5540P



Self-heating mask with thermal effect. The true "all-rounder" among the masks, which has a double impact and impressive lifting effect: Heat and vascular dilation helps significantly boost the penetration of active ingredients and after cooling and vascular constriction, the active ingredients are "sealed" in an ideal way.

Relaxing Massage Cream

Prof. 200 ml
Ref. 5580P



For professional facial and body massages: Rich water/oil emulsion for face and body with an especially smooth and rich consistency. Supports your targeted massage by stimulating the micro and blood circulation and mobilises active lymphatic drainage.

Herbal Skin Ointment

Prof. 200 ml
Ref. 5520P



Smooth beneficial, soothing herbal cream: The optimal complement and completion of wellness for often neglected areas such as hands, feet, elbows during a face and décolleté massage. Intensive healing cream for the treatment of distressed and uncomfortable skin on the face, body, hands, feet and elbows. With echinacea for stimulating the healing process and farnesol for regeneration.

Mask Activator

Prof. 500 ml Ref. 5589P

Prof. 1000 ml Ref. 5590P



The BASE and the MUST-HAVE basic for all masks: PEEL-OFF, DERMAFLEECE AND MASSAGE FLEECE PURE. Demineralised tonic, infuses the masks with moisture and promotes their effectiveness and kindness to skin.

Hydrogel Mask Face

Prof. 3 x 1 blister

Ref. 8207P



Refreshing algae mask for intensive moisture penetration. Lipid free, transparent hydrogel basis with hyaluronic acid and hyalurosmooth™, ensures the effective transport of active ingredients into the skin. The result: A significantly more radiant and smoother complexion.

Biocellulose Mask

Prof. 10 pieces

Ref. 8205P



The professional mask for active ingredient concentrates: Extremely flexible and absorptive, effective active ingredient carrier: With immediate noticeable effect. Gentle and supple the mask cools and intensively infuses the skin with a generous amount of moisture. Application can be customised to skin type.

Hydrogel Mask Eye

10 pieces

Ref. 8208P



Refreshing, decongestant eye patches. The optimal complement to the Hydrogel Mask Face, specially designed for the eyes. Relieves irritations, smooths dry wrinkles, alleviates lacrimal sacs. Also combats dark circles. The result: Instantly fresher, more radiant eye area.

Biocellulose Mask Face & Neck

Prof. 3 pieces

Ref. 8206P



Skin-firming, anti-aging luxury for face and neck. The innovative premium mask, especially absorptive for the Effect Serum guarantees your client an instantly noticeable and visible revitalisation with firming and smoothing effect.

Massage Fleece Pure

Prof. 1 set

Ref. 8301.901



Massage gel for intense moisture penetration during facial massage. Extremely high quality natural biomatrix with brown algae and phytosqualane, the gel is lipid free, cooling, odourless and very easy to use. The massage fleece dry matrix is activated with individually chosen ampoules therefore customizing the treatment for your client.

APPLICATION of BIOCELLULOSE MASK

Cleanse and exfoliate the skin, apply an active substance concentrate corresponding to the skin type and gently press into the skin.

- 1st step:** Open the mask sachet, remove the contents and place on a plate. Carefully unfold until the facial oval is lying fully on the plate. The biocellulose mask is located centrally between two protective carrier layers: a blue fleece and a white nylon fabric.
- 2nd step:** Slowly peel off and dispose of the blue fleece. Now place the biocellulose mask onto face and press gently. The second carrier layer consisting of nylon fabric (white) now points upwards. Simply peel this off and dispose of.
- 3rd step:** Adapt the biocellulose mask to the facial contours using a spatula to create a "second skin". Smooth out any air bubbles.
- 4th step:** Allow to work in for 15 -20 minutes.
- 5th step:** Peel the biocellulose mask off from the forehead and continue the treatment as desired or conclude it (e.g. massage or concluding cream).

SKIN APPLETS DRY SKIN

STANDARD TREATMENT SEQUENCE		
	REF	PRODUCT
Cleansing	500P	Mild Creamy Cleanser
Refreshing	501P	Radiant Firming Tonic
Eye care <i>(Optionally as protective care prior to peeling depending on skin sensitivity)</i>	561P	Eye Zone Gel
Deep cleansing / peeling	508P	Mild Face Rub <i>or</i>
	7807P	Enzyme Peeling Mask
Extra cleansing <i>(if required)</i>	4430P	Normalizing Skin Complex
Ampoule concentrate	1951P	Hyaluron Fluid
Active substance complex	535P	Hydrating Skin Complex
Massage	527P	Night Replenisher <i>or</i>
	8301.901	Massage Fleece Pure
ADVANCED TREATMENT OPTIONS WITH ALTERNATIVE MASKS		
Dry Skin	590P	Hydrating gel Mask ⁺
Dermafleece Mask	8104.915	Collagen Hyaluron <i>or</i>
	8104.901	Collagen Pure <i>or</i>
	8106.901	Collagen Eyelid Mask (bean) <i>or</i>
	8109.901	Collagen Eye Contour Pad (oval)
Peel Off Mask	8350P	Snow Algae-Hydrating <i>or</i>
	P-831P	Spirulina Green Mask
Facial Cream Mask	8550P	White Tea Moisture Mask <i>or</i>
	8560P	Pomegranate Cream Mask
Essentials	8205P	Biocellulose Mask <i>or</i>
	8206P	Biocellulose Mask Face & Neck <i>or</i>
	8207P	Hydrogel Mask Face <i>or</i>
	8208P	Hydrogel Mask Eye
FINISHING		
UV protection	2831P	Face Guard Advanced
Conclusion - eye area	561P	Eye Zone Gel
Day protection	517P	Day Vitalizer <i>or</i>
	5117P	Aquatense Moisture Gel ⁺ <i>or</i>
	524P	Hyaluron Impulse

* When choosing to apply Dermafleece, Biocellulose or Hydrogel Mask:
Please reverse application steps to apply mask first then massage!

SKIN APPLETS SENSITIVE SKIN

STANDARD TREATMENT SEQUENCE		
	REF	PRODUCT
Cleansing	2200P	Mild Cleansing Cream
Refreshing	2201P	Soothing Gel Toner
Eye care <i>(Optionally as protective care prior to peeling depending on skin sensitivity)</i>	2260P	Eye Care Lotion
Deep cleansing / peeling	508P	Mild Face Rub
Ampoule concentrate	1911P	De-Stress <i>or</i>
	1921P	Couperose Fluid
Active substance complex	2230P	Sensitive Skin Complex <i>or</i>
	2233P	Couperose Gel
	2231P	Pro-Immune Serum
Massage	2220P	Calming Sensitive Cream
	8301.901	Massage Fleece Pure
	2221P	Anti-Pollution Cream
ADVANCED TREATMENT OPTIONS WITH ALTERNATIVE MASKS		
Sensitive Skin	2240P	Soothing Face Mask
Dermafleece Mask	8104.902	Collagen Aloe Vera <i>or</i>
	8106.901	Collagen Eyelid Mask (bean) <i>or</i>
	8109.901	Collagen Eye Contour Pad (oval)
Peel Off Mask	8355P	Aloe De Stress <i>or</i>
	P-831P	Spirulina Green Mask
Facial Cream Mask	8520P	Sensitive Face Mask
Essentials	8205P	Biocellulose Mask <i>or</i>
	8206P	Biocellulose Mask Face & Neck
FINISHING		
UV protection	2831P	Face Guard Advanced
Conclusion - eye area	2260P	Eye Care Lotion
Day protection	2210P	Soothing Face Lotion

* When choosing to apply Dermafleece, Biocellulose or Hydrogel Mask:
Please reverse application steps to apply mask first then massage!



SKIN APPLETS OILY SKIN

STANDARD TREATMENT SEQUENCE		
	REF	PRODUCTS
Cleansing	4400P	Clarifying Cleansing Gel
Refreshing	4401P	Purifying Tonic Lotion
Eye care <i>(Optionally as protective care prior to peeling depending on skin sensitivity)</i>	561P	Eye Zone Gel
Deep cleansing / peeling	561P	Bio-Fruit Gel Exfoliator <i>or</i>
	7807P	Enzyme Peeling Mask
Extra cleansing <i>(if required)</i>	4430P	Normalizing Skin Complex
Ampoule concentrate	1941P	Normalizing Skin Fluid
Active substance complex	4430P	Normalizing Skin Complex
Massage	6620P	Balancing Cream
	8301.901	Massage Fleece Pure
ADVANCED TREATMENT OPTIONS WITH ALTERNATIVE MASKS		
Oily Skin	4400P	Purifying Mask
Dermafleece Mask	8104.901	Collagen Aloe Vera <i>or</i>
	8104.915	Collagen Hyaluron <i>or</i>
	8106.901	Collagen Eyelid Mask (bean) <i>or</i>
	8109.901	Collagen Eye Contour Pad (oval)
Peel Off Mask	P-837P	Dead Sea Black Mask
	P-831	Spiruna Green Mask
Facial Cream Mask	8540P	Fruit Peel Cream Mask <i>or</i>
	8530P	Moor Cream Mask
Essentials	8205P	Biocellulose Mask <i>or</i>
	8206P	Biocellulose Mask Face & Neck <i>or</i>
	8207P	Hydrogel Mask Face <i>or</i>
	8208P	Hydrogel Mask Eye
FINISHING		
UV protection	2831	Face Guard Advanced
Conclusion - eye area	561P	Eye Zone Gel
Day protection	4431P	Microsilver Serum
	4400P	Clarifying Cream Gel
	4421P	AHA Face Cream

* When choosing to apply Dermafleece, Biocellulose or Hydrogel Mask:
Please reverse application steps to apply mask first then massage!

SKIN APPLETS COMBINATION SKIN

STANDARD TREATMENT SEQUENCE		
	REF	PRODUCTS
Cleansing	6600P	Gentle Cleansing Powder
Refreshing	4401P	Purifying Tonic Lotion
Eye care <i>(Optionally as protective care prior to peeling depending on skin sensitivity)</i>	561P 0061P	Eye Zone Gel <i>or</i> Rich Eye Contour Cream
Deep cleansing / peeling	4407P 7807P	Bio-Fruit Gel Exfoliator <i>or</i> Enzyme Peeling Mask
Extra cleansing <i>(if required)</i>	4430P	Normalizing Skin Complex
Ampoule concentrate	1941P 1951P	Normalizing Skin Fluid <i>or</i> Hyaluron Fluid
Active substance complex	6630P	Balancing Skin Complex
Massage	6620P 8301.901	Balancing Cream Massage Fleece Pure
ADVANCED TREATMENT OPTIONS WITH ALTERNATIVE MASKS		
Dermafleece Mask	8104.901	Collagen Pure <i>or</i>
	8104.915	Collagen Hyaluron <i>or</i>
	8106.901	Collagen Eyelid Mask (bean) <i>or</i>
	8109.901	Collagen Eye Contour Pad (oval)
Peel Off Mask	8366P	Olive Balancing
	P-831P	Spirulina Green Mask
Facial Cream Mask	8530P	Moor Cream Mask
Essentials	8205P	Biocellulose Mask <i>or</i>
	8206P	Biocellulose Mask Face & Neck <i>or</i>
	8207P	Hydrogel Mask Face <i>or</i>
	8208P	Hydrogel Mask Eye
FINISHING		
UV protection	2831P	Face Guard Advanced
Conclusion - eye area	561	Eye Zone Gel <i>or</i>
	0061	Rich Eye Contour Cream
Day protection	6611	Tinted Balancing Cream
	6620	Balancing Cream

* When choosing to apply Dermafleece, Biocellulose or Hydrogel Mask:
Please reverse application steps to apply mask first then massage!



SKIN APPLETS FAIR SKIN

1

STANDARD TREATMENT SEQUENCE		
	REF	PRODUCTS
Cleansing	3300P	Melafadin Cleansing Powder
Refreshing	3301P	Melafadin Toner
Eye care <i>(Optionally as protective care prior to peeling depending on skin sensitivity)</i>	3360P	Dark Circle Eye Cream
Deep cleansing / peeling	3307P 4407P	Brightening Exfoliator <i>or</i> Bio-Fruit Gel Exfoliator
Extra cleansing <i>(if required)</i>	4430P	Normalizing Skin Complex

2a

INITIAL TREATMENT		
Ampoule concentrate	3370P	2-Phase Melafadin Concentrate
Massage	3340P	Brightening Mask

2b

MAINTENANCE TREATMENT		
Ampoule concentrate	1981P	Melafadin Fluid
Massage	5580P	Relaxing Massage Cream <i>or</i>
	1911P	De-Stress Ampoule <i>with</i>
	3321P	Brightening Night Care <i>or</i>
	3340P	Brightening Mask

3

ADVANCED TREATMENT OPTIONS WITH ALTERNATIVE MASKS		
Fair Skin	3340P	Brightening Mask
Dermafleece Mask	8104.917	Collagen Fair Skin <i>or</i>
	8106.901	Collagen Eyelid Mask (bean) <i>or</i>
	8109.901	Collagen Eye Contour Pad (oval)
Peel Off Mask	P-834P	Botanica White Mask

4

FINISHING		
Conclusion - eye area	3360P	Dark Circle Eye Cream
Day protection <i>with SPF 20</i>	3311P	Brightening Day Protection

* When choosing to apply Dermafleece, Biocellulose or Hydrogel Mask:
Please reverse application steps to apply mask first then massage!

SKIN APPLETS DETOX

STANDARD TREATMENT SEQUENCE		
	REF	PRODUCTS
Cleansing	0000P	Brightening Face Cleanser
Refreshing	0001P	Brightening Face Freshener
Eye care <i>(Optionally as protective care prior to peeling depending on skin sensitivity)</i>	0061P	Rich Eye Contour Cream
Deep cleansing / peeling	3307P	Brightening Exfoliator
Extra cleansing <i>(if required)</i>	4430P	Normalizing Skin Complex
Ampoule concentrate	1929P	Detox Fluid
Active substance complex		
Massage	2910P	Detox Cream
ADVANCED TREATMENT OPTIONS WITH ALTERNATIVE MASKS		
Dermafleece Mask	8104.917	Collagen Fair Skin <i>or</i>
	8106.901	Collagen Eyelid Mask (bean) <i>or</i>
	8109.901	Collagen Eye Contour Pad (oval)
Cream Mask	3340P	Brightening Mask
Essentials	8205P	Biocellulose Mask <i>or</i>
	8206P	Biocellulose Mask Face & Neck <i>or</i>
	8208P	Hydrogel Mask Eye
FINISHING		
UV protection	2831P	Face Guard Advanced
Conclusion - eye area	0061P	Rich Eye Contour Cream
Day protection	2910P	Detox Cream

* When choosing to apply Dermafleece, Biocellulose or Hydrogel Mask:
Please reverse application steps to apply mask first then massage!



SKIN APPLET'S CAVIAR

STANDARD TREATMENT SEQUENCE		
	REF	PRODUCTS
Cleansing	1100P	Multi Action Cleansing Balm
Optional Mask	5504P	Revigorating Face Mask
Refreshing / Invigorating	1101P	Micellar Skin Tonic
Eye care <i>(Optionally as protective care prior to peeling depending on skin sensitivity)</i>	1160P	Tri-Care Eye Cream
Deep cleansing / peeling	1107P	Skin Refining Enzyme Peel <i>or</i>
	7570P	Thermo Peel Mask Cranberry
Extra cleansing <i>(if required)</i>	4430P	Normalizing Skin Complex
Ampoule concentrate	1991P	Caviar Extract
Active substance complex		
Massage	2600P	Caviar Luxury Cream
ADVANCED TREATMENT OPTIONS WITH ALTERNATIVE MASKS		
Dermafleece Mask	8104.913	Collagen Caviar Extract <i>or</i>
	8106.901	Collagen Eyelid Mask (bean) <i>or</i>
	8109.901	Collagen Eye Contour Pad (oval)
Essentials	8208P	Hydrogel Mask Eye
FINISHING		
UV protection	2831P	Face Guard Advanced
Conclusion - eye area	1260P	Platinum Care Eye Cream
Day protection	2600P	Caviar Luxury Cream



*** When choosing to apply Dermafleece, Biocellulose or Hydrogel Mask:
Please reverse application steps to apply mask first then massage!**

SKIN APPLETS EPIGENETIC

STANDARD TREATMENT SEQUENCE		
	REF	PRODUCTS
Cleansing	0000P	Brightening Face Cleanser
Refreshing	0001P	Brightening Face Freshener
Eye care <i>(Optionally as protective care prior to peeling depending on skin sensitivity)</i>	0061P	Rich Eye Contour Cream
Deep cleansing / peeling	7807P	Enzyme Peeling Mask
Extra cleansing <i>(if required)</i>	4430P	Normalizing Skin Complex
Ampoule concentrate		
Active substance complex	2931P	Epigenetic Serum
Massage	0021P	Lifting & Recovery Cream <i>or</i>
	8301.901	Massage Fleece Pure
ADVANCED TREATMENT OPTIONS WITH ALTERNATIVE MASKS		
Dermafleece Mask	8106.901	Collagen Eyelid Mask (bean) <i>or</i>
	8109.901	Collagen Eye Contour Pad (oval)
Essentials	8207P	Hydrogel Mask Face <i>or</i>
	8205P	Biocellulose Mask <i>or</i>
	8206P	Biocellulose Mask Face & Neck
FINISHING		
UV protection	2831P	Face Guard Advanced
Conclusion - eye area	0061P	Rich Eye Contour Cream
Day protection	2931P	Epigenetic Serum <i>under the cream</i>
	0022P	Vitaforce C Cream <i>or</i>
	0011P	Optimal Tinted Complexion Cream



* When choosing to apply Dermafleece, Biocellulose or Hydrogel Mask:
Please reverse application steps to apply mask first then massage!



SKIN APPLETS DEMANDING SKIN

STANDARD TREATMENT SEQUENCE		
	REF	PRODUCTS
Cleansing	0000P	Brightening Face Cleanser
Refreshing / Invigorating	0001P	Brightening Face Freshener
Optional Mask	5504P	Revigorating Face Mask
Eye care <i>(Optionally as protective care prior to peeling depending on skin sensitivity)</i>	0061P	Rich Eye Contour Cream
Deep cleansing / peeling	0007P	Intensive Face Scrub <i>or</i>
	7807P	Enzyme Peeling Mask
Extra cleansing <i>(if required)</i>	4430P	Normalizing Skin Complex
Ampoule concentrate	1992P	Anti-Wrinkle Booster
Active substance complex	0031P	Vitaforce C Skin Complex
Massage	0021P	Lifting & Recovery Cream <i>or</i>
	0022P	Vitaforce C Cream
ADVANCED TREATMENT OPTIONS WITH ALTERNATIVE MASKS		
Demanding Skin	0041P	Rich Energv Mask
Dermafleece Mask	88104.901	Collagen Pure <i>or</i>
	104.912	Collagen Vitamin C <i>or</i>
	8104.903	Collagen Allantoin & Panthenol <i>or</i>
	8106.901	Collagen Eyelid Mask (bean) <i>or</i>
	8109.901	Collagen Eye Contour Pad (oval)
Peel Off Mask	P-831P	Spirulina Green Mask <i>or</i>
	8399P	Goji Anti Oxidant
Facial Cream Mask	P-8399P	Age Defying Cream Mask <i>or</i>
	8560P	Pomegranate Cream Mask
Essentials	5540P	Thermo Face Mask <i>or</i>
	8205P	Biocellulose Mask <i>or</i>
	8206P	Biocellulose Mask Face & Neck <i>or</i>
	8207P	Hydrogel Mask Face <i>or</i>
	8208P	Hydrogel Mask Eye
FINISHING		
UV protection	2831P	Face Guard Advanced
Conclusion - eye area	0061P	Rich Eye Contour Cream
Day protection	0011P	Optimal Tinted Complexion Cream <i>or</i>
	0010P	Rich Nutrient Skin Refiner <i>or</i>
	0022P	Vitaforce C Cream

SKIN APPLETS MATURE SKIN

STANDARD TREATMENT SEQUENCE		
	REF	PRODUCTS
Cleansing	1100P	Multi Action Cleansing Balm
Refreshing	1101P	Micellar Skin Tonic
Optional Invigorating	5504P	Revigorating Face Mask
Eye care <i>(Optionally as protective care prior to peeling depending on skin sensitivity)</i>	1160P	Tri-Care Eye Cream
Deep cleansing / peeling	1107P	Skin Refining Enzyme Peel <i>alternatively</i> Thermo Peel Mask Cranberry
Extra cleansing <i>(if required)</i>	4430P	Normalizing Skin Complex
Ampoule concentrate	1991P	Caviar Extract <i>or</i>
	1995P	Stem Cell Fluid <i>or</i>
	1917P	Skin Contour Fluid
Active substance complex	1130P	Age Perfecting Serum <i>or</i>
	1190P	Instant Lift Serum
Massage	1120P	Rich Recovery Cream <i>or</i>
	1117P	Skin Contour Cream
ADVANCED TREATMENT OPTIONS WITH ALTERNATIVE MASKS		
Mature Skin	1140P	Rejuvenating Mask
Dermafleece Mask	8104.901	Collagen Pure <i>or</i>
	8104.913	Collagen Caviar Extract
	8106.901	Collagen Eyelid Mask (bean) <i>or</i>
	8109.901	Collagen Eye Contour Pad (oval)
Peel Off Mask	P-832P	Acerola Vitamin C
Facial Cream Mask	8510P	Lift Contour Cream Mask
	8560P	Pomegranate Cream Mask
Essentials	5540P	Thermo Face Mask <i>or</i>
	8205P	Biocellulose Mask <i>or</i>
	8206P	Biocellulose Mask Face & Neck
	8207P <i>or</i> 8208P	Hydrogel Mask Face <i>or</i> Hydrogel Mask Eye
FINISHING		
UV protection	2831P	Face Guard Advanced
Conclusion - eye area	1160P	Tri-Care Eye Cream
Day protection	1110P	Perfect Lift Cream <i>or</i>
	1117P	Skin Contour Cream <i>or</i>
	1170P	Isolflavonia Relief

* When choosing to apply Dermafleece, Biocellulose or Hydrogel Mask:
Please reverse application steps to apply mask first then massage!



SKIN APPLETS PLATINUM CARE

STANDARD TREATMENT SEQUENCE		
	REF	PRODUCTS
Cleansing	1100P	Multi Action Cleansing Balm
Refreshing	1101P	Micellar Skin Tonic
Optional Mask	5504P	Revigorating Face Mask
Eye care <i>(Optionally as protective care prior to peeling depending on skin sensitivity)</i>	1260P	PLATINUM CARE Eye Cream
Deep cleansing / peeling	1107P	Skin Refining Enzyme Peel <i>or</i>
	7570P	Thermo Peel Mask Cranberry
Extra cleansing <i>(if required)</i>		
Ampoule concentrate	1900P	Eye Flash Fluid
	1290P	Brilliance Shine Elixir
Active substance complex	1230P	PLATINUM CARE Effect Serum
Massage	1220P	PLATINUM CARE Night Cream
ADVANCED TREATMENT OPTIONS WITH ALTERNATIVE MASKS		
Dermafleece Mask	8104.912	Collagen Vitamin C
	8106.901	Collagen Eyelid Mask (bean) <i>or</i>
	8109.901	Collagen Eye Contour Pad (oval)
Peel Off Mask	P-832P	Acerola Vitamin C Mask
Facial Cream Mask	8510P	Lift Contour Cream Mask
Essentials	5540P	Thermo Face Mask
	8205P	Biocellulose Mask
	8206P	Biocellulose Mask Face & Neck
	8208P	Hydrogel Mask Eye
<i>During the mask application, a pressure point massage to neck and décolleté is possible.</i>		
FINISHING		
UV protection	2831P	Face Guard Advanced
Conclusion - eye area	1260P	PLATINUM CARE Eye Cream
Day protection	1230P	PLATINUM CARE Effect Serum <i>or</i>
	1210P	PLATINUM CARE Day Cream

*** When choosing to apply Dermafleece, Biocellulose or Hydrogel Mask:
Please reverse application steps to apply mask first then massage!**

SKIN APPLETS MAKE UP

TREATMENT SEQUENCE

Pre-treatment

- Cleanse with a cleansing gel/lotion appropriate to the skin type.
- Refresh with a corresponding tonic.

Deep cleansing

- Carry out a facial or body exfoliation
 - ▶ Removal of dead skin cells
 - ▶ To remove dead skin cells and to smooth areas of uneven skin allowing improved penetration of subsequent products

Skin care

- Skin care cream according to the skin's type, condition and needs.

Apply camouflage cream

- Using a spatula, mix a pea-sized quantity of one or more shades of PERFECT COVER CREAM and mix until the color combination matches the skin color tone.
- Apply onto the skin using a make-up sponge. If necessary, moisten the sponge slightly and work the cream in well. Apply in thin layers.
- Repeat the process until the desired coverage intensity is achieved.

Apply fixing powder

- Fix the cream in place by applying a generous quantity of Perfect Fixing Powder on top so that the camouflage cream holds well. Allow to work in for 10 minutes, the camouflage cream is then waterproof and wipe-resistant.
- Use a soft bristle brush to remove excess powder.

Blusher and make-up

- Apply a little blusher to accentuate the face naturally. Then apply make-up as usual.

Camouflage cream removal

- Using the special cleansing cream massage thoroughly over the area of make-up
- Remove the cream with a paper tissue.
- Then apply a cleansing lotion appropriate to the skin type to subsequently cleanse the skin.

Skin care

- Skin care cream according to the skin's type, condition and needs.

TIP: PERFECT COVER CREAM colors 01 and 02 are outstanding concealers for e.g. rings around the eyes. Simply pat the cover cream over the dark eye area using a fingertip. In the case of dehydrated skin, use an eye cream beforehand. Then distribute Long Lasting Make-up or tinted day cream over the entire face to balance. PERFECT COVER CREAM colors 05 and 06 are outstanding for accentuating the cheeks. To do this, simply apply a little cover cream along the arc of the cheekbone in the same way as blusher.

SKIN APPLETS BODY

BODY CELLULITE (To activate lipolysis)		
TREATMENT SEQUENCE	REF	PRODUCTS
Cleansing / Peeling	7000P	Oxygenating Body Scrub
Special	5504P	Revigorating Face Mask
Finish	7801P	Body Contour Booster
BODY CELLULITE (To relieve congestion)		
Cleansing / Peeling	7000P	Oxygenating Body Scrub
Stimulate / Massage	7510P	Body Toning Modelage
Body Pack	7688P	Multi Action Algae Pack "BRITTANY"
Finish	7801P	Body Contour Booster
BODY CELLULITE (To activate slimming & firming)		
Cleansing / Peeling	7000P	Oxygenating Body Scrub
Stimulate / Massage	7510P	Body Toning Modelage
Body Pack	7690P	Cryogenic Alginate "ARCTIC"
Massage	7580P	Body Sculpturing Massage "TUSCANY"
Finish	7801P	Body Contour Booster
BUST AND DECOLLETÉ (To volumize and lift)		
Cleansing / Peeling	7000P	Oxygenating Body Scrub
Stimulate / Massage	7510P	Body Toning Modelage
Body Pack	7690P	Cryogenic Alginate "ARCTIC"
Finish	7700P	Perfect Bust Formula
Bust and décolleté (To model and firm)		
Cleansing / Peeling	7000P	Oxygenating Body Scrub
Stimulate / Massage	7510P	Body Toning Modelage
Body Pack	5504P	Revigorating Face Mask
Finish	7700P	Perfect Bust Formula
Stressed body joints, congestion and oedema		
Cleansing / Peeling	7000P	Oxygenating Body Scrub
Massage / Finish	7510P	Body Toning Modelage
Body Pack	7687P	Dead Sea Black Mud "AL NADARA"
Finish	7240	Vitaforce ACE Body Cream

SKIN APPLETS EXFOLIATION

TREATMENT SEQUENCE	REF	PRODUCTS
Preparation		<p>Prepare the exfoliation system in the product application sequence:</p> <p>Pump the chosen exfoliant into a small dish, place the brush next to it ready for use.</p> <p>Prepare pH neutralizer for post treatment application in a second dish and place a separate brush next to it ready for use.</p> <p>Ensure the timer is ready to check the precise exposure time.</p>
Cleansing	5700P	Cleanser
Protection		<p>Cover sensitive areas of skin (e.g. lips, moles) with blocking cream.</p> <p>To protect the eyes, simply apply blocking cream locally at the corners of the eyes and cover the closed eyes with cotton wool pads. Pigmented eyebrows can also be included.</p>
Deep cleansing/ peeling	5720P 5730P 5740P 5760P	Exfoliator 20 <i>or</i> Exfoliator 30 <i>or</i> Exfoliator 40 <i>or</i> Exfoliator 60
Neutralization	5710P	pH Neutralizer
Massage	2230P	Sensitive Skin Complex
Conclusion - eye area	561P	Eye Zone Gel
Day protection with SPF	2831P	Face Guard Advanced



WELLNESS & SPA

SUCCESSFUL EXPERIENCES FOR BODY AND SOUL

Whether highly innovative, classically Western or from the Far East, the luxury rituals offer six different approaches that you can tailor individually to the wishes of your customers.

Simply choose one or more treatment concepts suitable for your salon. This completes your offer – and gives your salon even more charm as a wellness oasis.

- Detoxifying maritime concept
- Anti-aging with body firming
- “Fountain of youth” active concept with superfood
- Sweet pleasure treatment with chocolate
- Skin smoothing “Pure nature”
- Asian balance treatment



TIP FOR PROFESSIONALS

An enjoyable harmony of body, soul and mind:
With these exceptional treatments you simultaneously offer your client the valuable approach of preventive healthcare.



OCEAN TREASURE

The power of the ocean activates and revives

The depths of the oceans hide invaluable treasures for our body. These gems straight from the sea enrich our skin with unparalleled vitality and freshness.

THE RESULT:

A silky skin with a visibly firmer silhouette.

Marine Salt Body Rub

Prof. 1000 g
Ref. P-8671P



Finely powdered sea salt as a peel additive for massage oil. Finely-ground marine salt crystals enriched with the oily extract of Laminaria algae combine the full force of the ocean to form a mild effective, peeling powder. The abrasive power of the marine salt crystals smoothes the skin, vital substances comprised of salt and algae (minerals and trace elements) provide the metabolism with a special stimulant.

Marine Melody Body Pack

Prof. 1000 ml
Ref. P-8680P



Stimulating and nourishing ingredients obtained from Atlantic green algae extracts make this cream body pack a particularly moisturising treat for your skin.



SKIN APPLETS

OCEAN TREASURE TREATMENTS	PRODUCTS
MARINE SALT BATH	
Cleansing & Detoxifying	Marine Salt Body Rub Body Massage Oil (if needed)
MARINE SALT BODY PEEL	
Soothing & Energising	Marine Salt Body Rub Body Massage Oil (if needed)
SOFT BODY PEEL WITH NATURAL SEA SPONGE	
Soothing & Energising	Oxygenating Body Scrub (BODY)
ALGAE BODY TREATMENT PACK	
Metabolism Activating & Skin Smoothing	Marine Melody Body Pack
DETOXIFYING MASSAGE	
Activating & Reviving	Body Massage Oil
PRESSURE POINT MASSAGE WITH SEA SHELLS	
Relaxing & Vitalising	Body Massage Oil
OCEAN TREASURE TREATMENT	
Cleansing treatment	Refreshing Shower Gel
Body peel	Marine Salt Body Rub Body Massage Oil
Mask	Marine Melody Body Pack
Massage	Body Massage Oil
Finishing touch (if needed)	Moisturizing Body Lotion

SWEET TEMPTATION

Sweet temptation for the skin

With chocolate, you can offer a genuine “endorphin remedy”: The body secretes its own dopamine, making your treatment an enjoyable overall experience. As a result, you relieve tensions and create harmony. The skin appears energetic, smooth and firm again.

THE EFFECT:

Fragrance and pure enjoyment – a perfect wellness offer in the winter season.

Delicious Seduction Scrub

Prof. 1000 ml
Ref. P-8676P



Body peel with cocoa extracts. Delicious seduction scrub is a unique spa experience for the skin and the senses. On application, this skin improving creme gel releases an intense chocolate fragrance. Delicious seduction scrub effectively removes rough skin and makes dry skin look smoother and suppler, particularly during the cooler months of the year.

Creamy Chocolate Body Pack

Prof. 1000 ml
Ref. P-8686P



Creamy chocolate has a delicious melt-in-the-mouth taste, now it is possible to have that feeling on your skin too! The smooth consistency of this creamy body pack makes it easy to apply and spread over the whole body. It is the perfect treat for the skin, because it feels velvety soft and incredibly smooth. Dry skin becomes beautifully soft again. The cocoa fragrance is relaxing and stimulates body and soul.



SKIN APPLETS

SWEET TEMPTATION TREATMENTS	PRODUCTS
MILK BATH PRODUCTS	
Cleansing & Relaxing	Milky Bath Powder Body Massage Oil (if needed)
COCOA BODY PEEL	
Smoothing & Balance Restoring	Delicious Seduction Scrub
CHOCOLATE BODY TREATMENT PACK	
Moisturising & Soothing	Creamy Chocolate Body Pack
SPA MASSAGE TREAT	
Vitalising & Relaxing	Body Massage Oil
REFRESHING HAMMAM	
Revitalising & Cleansing	Refreshing Shower Gel
SWEET TEMPTATION TREATMENT	
Cleansing treatment	Refreshing Shower Gel
Body peel	Delicious Seduction Scrub
Mask	Marine Melody Body Pack
Massage	Body Massage Oil
Finishing touch (if needed)	Moisturizing Body Lotion

PURE HARMONY

Inner balance for body and soul

White tea is the finest of all tea varieties. For almost 5,000 years it has been treasured in Asia as one of the most valuable medicinal plants in existence. With an extremely high content of polyphenols, its extract is particularly effective in preventing premature aging of the skin. Revitalising, whilst at the same time skin irritations are relieved and calmed.

THE BALANCING TREATMENT

Regeneration from head to toe with renewed vitality and revigoration for body and soul.

Well Being Body Scrub

Prof. 1000 ml

Ref. P-8677P



Well being body scrub with natural camelia sinensis extract is a balance restoring, skin improving body peel. on application, this pastel green skin improving creme gel releases an intensive green tea fragrance. It was developed especially as one element of a "PURE HARMONY" spa ritual treatment. The white tea extract releases valuable antioxidants and already cares and protects the skin even as it is being exfoliated.

Calming Body Pack

Prof. 1000 ml

Ref. P-8681P



Creamy body pack which makes the body skin velvety soft. Especially dry skin becomes beautifully soft again with the help of the tea extract's skin strengthening properties, which reduce free radicals. After every application, the body silhouette is visibly smoother and the skin is more resilient. The rebalanced metabolism and the "tea treatment pack" fragrance immediately create a sense of well-being.



SKIN APPLETS

PURE HARMONY TREATMENTS	PRODUCTS
FOOTBATH	
Cleansing	Refreshing Shower Gel Body Massage Oil (if needed)
SOOTHING BODY PEEL	
Revitalising & Balance Restoring	Well Being Body Scrub
RELAX BODY TREATMENT PACK	
Moisturising & Relaxing	Calming Body Pack
RELAXATION MASSAGE	
Soothing & Vitalising	Body Massage Oil
SINGING BOWL MASSAGE	
Energising & Balance Restoring	Body Massage Oil
PURE HARMONY TREATMENT	
Cleansing treatment	Refreshing Shower Gel
Body peel	Well Being Body Scrub
Mask	Calming Body Pack
Massage	Body Massage Oil
Finishing touch (if needed)	Moisturizing Body Lotion

VINO ENJOYMENT

The anti-aging power of the red grape

Thanks to its vitalising and rejuvenating properties, wine therapy is a wonderful and proven anti-aging treatment for inducing beauty and well-being.

THE RESULT:

Visible and strengthened skin.

Luxury Reviving Scrub

Prof. 1000 ml
Ref. P-8674P



Luxury Reviving Scrub with natural vine leaf extracts is a skin improving body peel. On application, this mauve skin improving creme gel releases an intensive fresh, reviving fragrance. It was developed especially as one element of a "VINO ENJOYMENT" spa ritual treatment. Luxury Reviving Scrub is perfect for removing dead skin cells and improving the skin. It improves the absorption of follow-on skin care products, and dry skin looks suppler and smoother.

Vitalizing Body Pack

Prof. 1000 ml
Ref. P-8684P



The smooth consistency of this creamy treatment pack makes it easy to gently apply and spread over the whole body. It is like treat for the skin: velvety soft and incredibly smooth. Especially dry skin becomes beautifully soft again. Red vine leaves have a truly phytotherapeutic effect on diffuse redness and heavy legs. The vine leaf extract's active ingredients stabilise the vascular walls and tighten the skin.



SKIN APPLETS

VINO ENJOYMENT TREATMENTS	PRODUCTS
GRAPE SKIN PEEL	
Vitalising & Skin Smoothing	Luxury Reviving Scrub
VINO TREATMENT PACK	
Moisturising & Skin Smoothing	Vitalizing Body Pack
FIRMING WRAP	
Extremely Firming & Skin Smoothing	Thermo Body Pack
ANTI-AGING MASSAGE	
Energising & Vitalising	Body Massage Oil
TENSION RELEASE MASSAGE	
Activating & Firming	Body Massage Oil
VINO ENJOYMENT TREATMENT	
Cleansing treatment	Refreshing Shower Gel
Body peel	Luxury Reviving Scrub
Mask	Vitalizing Body Pack
Massage	Body Massage Oil
Finishing touch (if needed)	Moisturizing Body Lotion

YOUTH PERFECTION

Superfood that regenerates your whole body

The highly bioactive ingredients in cranberries protect the cells from oxidative stress. With the concentration of sodium, phosphorous, potassium and vitamin E, your treatment intensively stimulates cell division.

THE RESULT:

A youthfully tender, smooth skin surface – The Fountain of Youth for your clients.

Younger You Body Scrub

Prof. 1000 ml
Ref. P-8678P



Younger You Body Scrub with natural cranberry seed oil smooths the epidermis and removes dead skin cells, impurities and calloused cells. On application, this pastel pink skin improving creme gel releases an intensive fruity and sweet fragrance. Cranberry seed oil contains polyunsaturated fatty acids and α -tocotrienol and has strong antioxidative properties.

Rejuvenating Body Pack

Prof. 1000 ml
Ref. P-8687P



A "fruit sorbet" especially for the skin! The smooth consistency of the cream pack makes it easy to spread all over the body and has a fruity fresh fragrance. Even just one application turns the usually quite dry skin on the body into a soft covering. The bioactive substances contained in the cranberry seed oil transports "anti-aging power" to the salon. The particularly high α -tocotrienol and fatty acid content has a firming and smoothing effect on the skin.



SKIN APPLETS

YOUTH PERFECTION TREATMENTS	PRODUCTS
CRANBERRY BODY PEEL	
Metabolism activating	Younger You Body Scrub
CREAMY BODY TREATMENT PACK	
Moisturising & Skin Smoothing	Rejuvenating Body Pack
REJUVENATING MASSAGE	
Vitalising & Stimulating	Body Massage Oil
NECK & SHOULDER MASSAGE	
Relaxing & Activating	Body Massage Oil
HOT STONE MASSAGE	
Reviving & Soothing	Body Massage Oil
YOUTH PERFECTION TREATMENT	
Cleansing treatment	Refreshing Shower Gel
Body peel	Younger You Body Scrub
Mask	Rejuvenating Body Pack
Massage	Body Massage Oil
Finishing touch (if needed)	Moisturizing Body Lotion

NATURE EXPERIENCE

The invigorating power of pure nature:

An pampering experience beyond compare with pure extracts. Copper beech stimulates cell metabolism whilst peat moss extract with its humic acid has an exceptionally skin clarifying and invigorating effect. Blueberry seed oil with unsaturated fatty acids smooths and firms.

THE EFFECT:

Reviving power of nature in your salon delivering smoothing and firming effects.

Green Freshness Scrub

Prof. 1000 ml
Ref. P-8679P



Green Freshness Scrub is a natural scented body peeling. The smooth creme gel contains pumice powder, which has an exfoliating effect. Green Freshness Scrub thoroughly cleanses the skin and prepares it perfectly for the application of follow-on skin care products.

Balancing Body Pack

Prof. 1000 ml
Ref. P-8689P



Creamy body pack which is easy to gently apply and spread over the whole body. Even sensitive skin benefits from the reviving effect of the peat extract in this body pack. Balancing Body Pack is a wonderfully nourishing and strengthening body-skin treatment. Any mask residues can easily be massaged into the skin and leave it feeling beautifully soft.



SKIN APPLETS

NATURE EXPERIENCE TREATMENTS PRODUCTS	
PEAT PEEL	
Skin Cleansing & Stimulating	Green Freshness Scrub
BIO-BALANCE TREATMENT PACK	
Moisturising & Balance Restoring	Balancing Body Pack
DETOX WRAP	
Detoxifying & Firming	Dead Sea Black Mud "Al Nadara" (BODY)
DETOX MASSAGE	
Detoxifying & Reviving	Body Massage Oil
BODY BALANCING TREATMENT	
Cleansing treatment	Body Massage Oil
Body peel	Refreshing Shower Gel
Mask	Balancing Body Pack
Massage	Body Massage Oil
Finishing touch (if needed)	Moisturizing Body Lotion

ESSENTIALS

Special essentials products that are a must for every salon and can be added to all treatments.

Body Massage Oil

Prof. 500 ml
Ref. P-8788P



Body Massage Oil is a high-quality oil obtained from the nuts of the macadamia tree. The light yellow nut oil contains a high quantity of palmitoleic acid and is an outstanding skin moisturizer and softener.

Refreshing Shower Gel

Prof. 1000 ml
Ref. P-8701P



Refreshing Shower Gel with algae extracts and sea minerals cleanses the body especially gently and thoroughly. The rich, silky foam caresses the skin, leaving it feeling fresh and well cared-for, without drying out. Combined with sea water, a unique complex of brown, green and red algae revitalises the skin and supplies it with valuable sea minerals and trace elements. Lipid-promoting agents help to maintain the skin's lipid protection.

Body Gel Pack

Prof. 3 L
Ref. P-8871P



Body Gel Pack is a fruity, red gel with a refreshing consistency with the vitalizing and rejuvenating properties of cranberries. In wellness treatments, application all over the entire body is an absolute "must". It is easy to apply and even easy to remove with moist compresses.

Thermo Body Pack

Prof. 4 Kg
Ref. P-8882P



This autothermal body pack supports wellness treatment with algae extracts "par excellence". As soon as the Laminaria digitata algae powder is combined with water, the solution reacts by heating up. Under the influence of this heat, the wellness treatment has a particularly relaxing character.

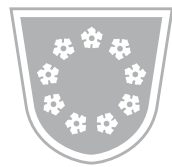
Moisturing Body Lotion

Prof. 1000 ml
Ref. P-8901P



Caring Body Lotion with selected algae extracts, moisturising active ingredients and natural lipids. Moisturizing body lotion is the ideal conclusion to any wellness treatment. Thanks to its light, non-greasy texture, the emulsion is absorbed immediately, so you can dress straight away.





JANSSEN COSMETICS

WE BEAUTIFY THE WORLD



Janssen Cosmetics GmbH

52005 Aachen · Germany · info@janssen-cosmetics.com

www.janssen-cosmetics.com

Ref. 929.120